

Product datasheet for TA342282

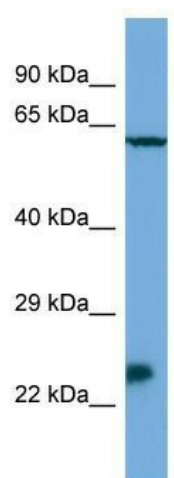
Msx3 Rabbit Polyclonal Antibody

Product data:

Product Type:	Primary Antibodies
Applications:	WB
Recommended Dilution:	WB
Reactivity:	Human
Host:	Rabbit
Isotype:	IgG
Clonality:	Polyclonal
Immunogen:	The immunogen for anti-Msx3 antibody is: synthetic peptide directed towards the N-terminal region of Mouse Msx3. Synthetic peptide located within the following region: DMNAAGLEARGGGHTEHGPLPFSVESLLEAERVPGSESGELGVERPLGAS
Formulation:	Liquid. Purified antibody supplied in 1x PBS buffer with 0.09% (w/v) sodium azide and 2% sucrose.
Conjugation:	Unconjugated
Storage:	Store at -20°C as received.
Stability:	Stable for 12 months from date of receipt.
Predicted Protein Size:	22 kDa
Gene Name:	msh homeobox 3
Database Link:	NP_034966 Entrez Gene 17703 Mouse P70354
Background:	Msx3 acts as a potent transcriptional repressor of MSX1.
Synonyms:	AI323377
Note:	Immunogen Sequence Homology: Mouse: 100%; Rat: 86%


[View online »](#)

Product images:



Host: Rabbit; Target Name: Msx3; Sample Tissue: SP2/0 Whole Cell lysates; Antibody Dilution: 1.0 ug/ml