

Product datasheet for **TA342281**

Msx3 Rabbit Polyclonal Antibody

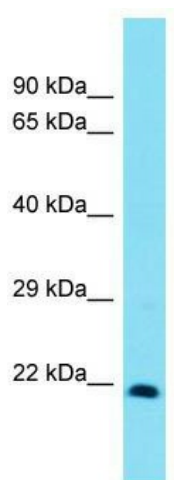
Product data:

Product Type:	Primary Antibodies
Applications:	WB
Recommended Dilution:	WB
Reactivity:	Rat
Host:	Rabbit
Isotype:	IgG
Clonality:	Polyclonal
Immunogen:	The immunogen for anti-Msx3 antibody is: synthetic peptide directed towards the C-terminal region of Rat Msx3. Synthetic peptide located within the following region: EKLKLTAKPLLPAAFALPFPLGTQLHSSAATFGGNAVPGILAGPVAAYGM
Formulation:	Liquid. Purified antibody supplied in 1x PBS buffer with 0.09% (w/v) sodium azide and 2% sucrose.
Conjugation:	Unconjugated
Storage:	Store at -20°C as received.
Stability:	Stable for 12 months from date of receipt.
Predicted Protein Size:	22 kDa
Gene Name:	msh homeobox 3
Database Link:	NP_034966 Entrez Gene 114504 Rat P70354
Background:	mouse homolog represses transcription of Msx1; repression may be mediated by binding to cAMP-response element binding protein CBP and histone deacetylase 1 [RGD, Feb 2006]. Sequence Note: The RefSeq transcript and protein were derived from genomic sequence because no single transcript was available for the full length of the gene. The extent of this transcript is supported by orthologous data. ##Evidence-Data-START## RNAseq introns :: single sample supports all introns SRS369732 [ECO:0000348] ##Evidence-Data-END##
Synonyms:	AI323377
Note:	Immunogen Sequence Homology: Rat: 100%; Mouse: 100%



[View online »](#)

Product images:



Host: Rabbit; Target Name: Msx3; Sample Tissue:
Rat Lung lysates; Antibody Dilution: 1.0 ug/ml