

Product datasheet for **TA342280**

MSX1 Rabbit Polyclonal Antibody

Product data:

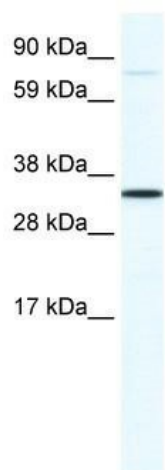
Product Type:	Primary Antibodies
Applications:	WB
Recommended Dilution:	WB
Reactivity:	Mouse
Host:	Rabbit
Isotype:	IgG
Clonality:	Polyclonal
Immunogen:	The immunogen for anti-MSX1 antibody: synthetic peptide directed towards the N terminal of mouse MSX1. Synthetic peptide located within the following region: KPGAKESVLVASEGAQAAGGSVQHLGTRPGSLGAPDAPSSPRPLGHFSVG
Formulation:	Liquid. Purified antibody supplied in 1x PBS buffer with 0.09% (w/v) sodium azide and 2% sucrose. <i>Note that this product is shipped as lyophilized powder to China customers.</i>
Purification:	Affinity Purified
Conjugation:	Unconjugated
Storage:	Store at -20°C as received.
Stability:	Stable for 12 months from date of receipt.
Predicted Protein Size:	33 kDa
Gene Name:	msh homeobox 1
Database Link:	NP_002439 Entrez Gene 17701 Mouse P28360
Background:	MSX1 belongs to the MSX family. MSX and DLX are members of the Antennapedia class of non-Hox homeodomain transcription factors that regulate gene expression and influence development of the craniofacial structures and anterior forebrain.
Synonyms:	ECTD3; HOX7; HYD1; STHAG1
Note:	Immunogen Sequence Homology: Dog: 100%; Pig: 100%; Rat: 100%; Human: 100%; Mouse: 100%; Bovine: 100%



[View online »](#)

Protein Families: Druggable Genome, Transcription Factors

Product images:



WB Suggested Anti-MSX1 Antibody Titration: 1.25 ug/ml; ELISA Titer: 1:62500; Positive Control: SP2/O cell lysate