

## Product datasheet for **TA342279**

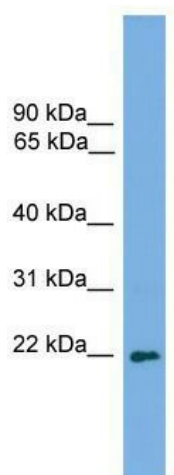
### MSC Rabbit Polyclonal Antibody

#### Product data:

Product Type:	Primary Antibodies
Applications:	WB
Recommended Dilution:	WB
Reactivity:	Mouse
Host:	Rabbit
Isotype:	IgG
Clonality:	Polyclonal
Immunogen:	The immunogen for anti-Msc antibody: synthetic peptide directed towards the C terminal of mouse Msc. Synthetic peptide located within the following region: IAHLRQLLQEDRYEDSYVHPVNLTWPFVSGRPDSDSKDVSAANRLCGTS
Formulation:	Liquid. Purified antibody supplied in 1x PBS buffer with 0.09% (w/v) sodium azide and 2% sucrose. <i>Note that this product is shipped as lyophilized powder to China customers.</i>
Conjugation:	Unconjugated
Storage:	Store at -20°C as received.
Stability:	Stable for 12 months from date of receipt.
Predicted Protein Size:	21 kDa
Gene Name:	musculin
Database Link:	<a href="#">NP_005089</a> <a href="#">Entrez Gene 17681 Mouse</a> <a href="#">O60682</a>
Background:	Transcription repressor that blocks myogenesis and activation of E-box dependent muscle genes.
Synonyms:	ABF-1; ABF1; bHLHa22; MYOR
Note:	Immunogen Sequence Homology: Mouse: 100%; Pig: 93%; Rat: 93%; Guinea pig: 93%; Dog: 86%; Horse: 86%; Human: 86%; Bovine: 86%; Rabbit: 79%
Protein Families:	Druggable Genome, Transcription Factors



[View online »](#)

**Product images:**

WB Suggested Anti-Msc Antibody Titration: 0.2-1 ug/ml; Positive Control: Mouse Small Intestine