

Product datasheet for **TA342278**

Mxd1 Rabbit Polyclonal Antibody

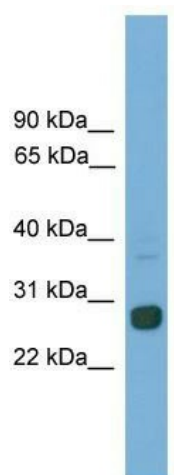
Product data:

Product Type:	Primary Antibodies
Applications:	WB
Recommended Dilution:	WB
Reactivity:	Mouse
Host:	Rabbit
Isotype:	IgG
Clonality:	Polyclonal
Immunogen:	The immunogen for anti-Mxd1 antibody: synthetic peptide corresponding to a region of Mouse. Synthetic peptide located within the following region: TQLKDTECTPVGGPLSLEQVQNGNDTPTQVEYQEAPETQVKARHKEGANQ
Formulation:	Liquid. Purified antibody supplied in 1x PBS buffer with 0.09% (w/v) sodium azide and 2% sucrose. <i>Note that this product is shipped as lyophilized powder to China customers.</i>
Purification:	Affinity Purified
Conjugation:	Unconjugated
Storage:	Store at -20°C as received.
Stability:	Stable for 12 months from date of receipt.
Predicted Protein Size:	25 kDa
Gene Name:	MAX dimerization protein 1
Database Link:	NP_034881 Entrez Gene 17119 Mouse
Background:	The function of Mxd1 remains unknown.
Synonyms:	MAD; MAD1; MGC104659
Note:	Immunogen Sequence Homology: Mouse: 100%; Rat: 93%; Rabbit: 86%; Bovine: 79%



[View online »](#)

Product images:



WB Suggested Anti-Mxd1 Antibody Titration: 0.2-1 ug/ml; ELISA Titer: 1:1562500; Positive Control: Mouse Spleen