

Product datasheet for **TA342276**

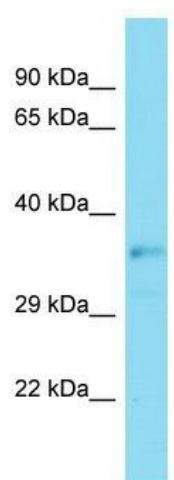
LHX9 Rabbit Polyclonal Antibody

Product data:

Product Type:	Primary Antibodies
Applications:	WB
Recommended Dilution:	WB
Reactivity:	Mouse
Host:	Rabbit
Isotype:	IgG
Clonality:	Polyclonal
Immunogen:	The immunogen for anti-Lhx9 antibody is: synthetic peptide directed towards the C-terminal region of Mouse Lhx9. Synthetic peptide located within the following region: QLRTMKSYFAINHNPDAKDLKQLAQKTGLTKRVLQGEQILGHYSQTSRRL
Formulation:	Liquid. Purified antibody supplied in 1x PBS buffer with 0.09% (w/v) sodium azide and 2% sucrose.
Conjugation:	Unconjugated
Storage:	Store at -20°C as received.
Stability:	Stable for 12 months from date of receipt.
Predicted Protein Size:	37 kDa
Gene Name:	LIM homeobox 9
Database Link:	NP_064589 Entrez Gene 16876 Mouse Q9NQ69
Background:	Lhx9 is involved in gonadal development.
Synonyms:	LIM homeobox 9; OTTHUMP00000033675; OTTHUMP00000033678
Note:	Immunogen Sequence Homology: Dog: 100%; Rat: 100%; Human: 100%; Mouse: 100%; Zebrafish: 93%
Protein Families:	Druggable Genome, Transcription Factors


[View online »](#)

Product images:



Host: Rabbit; Target Name: Lhx9; Sample Tissue: Mouse Kidney lysates; Antibody Dilution: 1.0 ug/ml