

Product datasheet for **TA342275**

LHX8 Rabbit Polyclonal Antibody

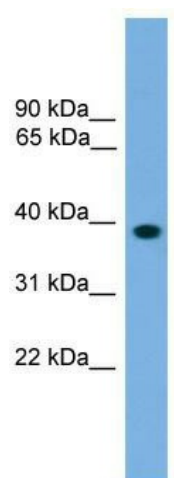
Product data:

Product Type:	Primary Antibodies
Applications:	WB
Recommended Dilution:	WB
Reactivity:	Mouse
Host:	Rabbit
Isotype:	IgG
Clonality:	Polyclonal
Immunogen:	The immunogen for anti-Lhx8 antibody: synthetic peptide directed towards the N terminal of mouse Lhx8. Synthetic peptide located within the following region: AGEEGLVNPEGAGDEDESCSSSAPLSPSSSPQSMASGSVCPPGKVCSSCG
Formulation:	Liquid. Purified antibody supplied in 1x PBS buffer with 0.09% (w/v) sodium azide and 2% sucrose. <i>Note that this product is shipped as lyophilized powder to China customers.</i>
Conjugation:	Unconjugated
Storage:	Store at -20°C as received.
Stability:	Stable for 12 months from date of receipt.
Predicted Protein Size:	41 kDa
Gene Name:	LIM homeobox 8
Database Link:	NP_001001933 Entrez Gene 16875 Mouse Q68G74
Background:	Transcription factor involved in differentiation of certain neurons and mesenchymal cells.
Synonyms:	LHX7
Note:	Immunogen Sequence Homology: Rat: 100%; Mouse: 100%; Human: 93%; Rabbit: 93%; Dog: 91%; Pig: 91%; Guinea pig: 91%; Bovine: 86%



[View online »](#)

Product images:



WB Suggested Anti-Lhx8 Antibody Titration: 0.2-1 ug/ml; ELISA Titer: 1:62500; Positive Control: NIH/3T3 cell lysate