

Product datasheet for TA342274

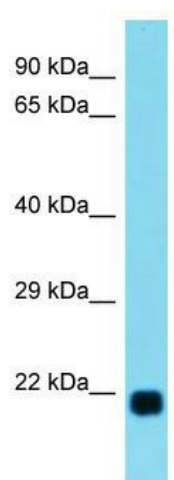
Lbx2 Rabbit Polyclonal Antibody

Product data:

Product Type:	Primary Antibodies
Applications:	WB
Recommended Dilution:	WB
Reactivity:	Rat
Host:	Rabbit
Isotype:	IgG
Clonality:	Polyclonal
Immunogen:	The immunogen for anti-Lbx2 antibody is: synthetic peptide directed towards the C-terminal region of Rat Lbx2. Synthetic peptide located within the following region: DVEEMRADLASLCLSPGVLCPPALPDSASSPDLQPTSPGPDSEPLSDE
Formulation:	Liquid. Purified antibody supplied in 1x PBS buffer with 0.09% (w/v) sodium azide and 2% sucrose.
Conjugation:	Unconjugated
Storage:	Store at -20°C as received.
Stability:	Stable for 12 months from date of receipt.
Predicted Protein Size:	21 kDa
Gene Name:	ladybird homeobox homolog 2 (Drosophila)
Database Link:	NP_034822 Entrez Gene 500224 Rat Q9WUN8
Background:	The function of this protein remains unknown.
Synonyms:	LP3727
Note:	Immunogen Sequence Homology: Mouse: 100%; Rat: 85%; Dog: 83%



[View online »](#)

Product images:

Host: Rabbit; Target Name: Lbx2; Sample Tissue: Rat Heart lysates; Antibody Dilution: 1.0 ug/ml