

Product datasheet for **TA342273**

Intersectin 1 (ITSN1) Rabbit Polyclonal Antibody

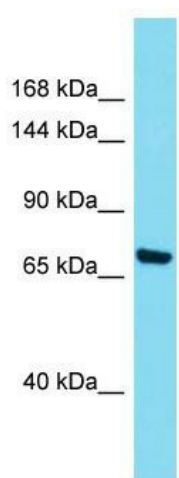
Product data:

Product Type:	Primary Antibodies
Applications:	WB
Recommended Dilution:	WB
Reactivity:	Mouse
Host:	Rabbit
Isotype:	IgG
Clonality:	Polyclonal
Immunogen:	The immunogen for anti-Itsn1 antibody is: synthetic peptide directed towards the middle region of Mouse Itsn1. Synthetic peptide located within the following region: IPPSFRRVRSGSGMSVISSSSVDQRLPEEPSEDEQQPEKLPVTFEDKK
Formulation:	Liquid. Purified antibody supplied in 1x PBS buffer with 0.09% (w/v) sodium azide and 2% sucrose.
Conjugation:	Unconjugated
Storage:	Store at -20°C as received.
Stability:	Stable for 12 months from date of receipt.
Predicted Protein Size:	70 kDa
Gene Name:	intersectin 1
Database Link:	NP_003015 Entrez Gene 16443 Mouse Q15811
Background:	The function of this protein remains unknown.
Synonyms:	ITSN; SH3D1A; SH3P17
Note:	Immunogen Sequence Homology: Rat: 100%; Mouse: 100%; Dog: 86%; Pig: 86%; Horse: 86%; Human: 86%; Bovine: 86%; Rabbit: 86%; Guinea pig: 86%



[View online »](#)

Product images:



Host: Rabbit; Target Name: Itsn1; Sample Tissue: Mouse Thymus lysates; Antibody Dilution: 1.0 ug/ml