

Product datasheet for **TA342271**

IRX2 Rabbit Polyclonal Antibody

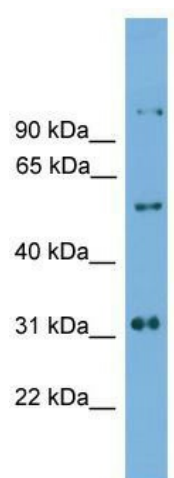
Product data:

Product Type:	Primary Antibodies
Applications:	WB
Recommended Dilution:	WB
Reactivity:	Mouse
Host:	Rabbit
Isotype:	IgG
Clonality:	Polyclonal
Immunogen:	The immunogen for anti-Irx2 antibody: synthetic peptide directed towards the c terminal of mouse Irx2. Synthetic peptide located within the following region: GETLHAMPKAASDTGKAGSHSLESHYRPPGGGYEPKKDTSEGCAVVGAGV
Formulation:	Liquid. Purified antibody supplied in 1x PBS buffer with 0.09% (w/v) sodium azide and 2% sucrose. <i>Note that this product is shipped as lyophilized powder to China customers.</i>
Conjugation:	Unconjugated
Storage:	Store at -20°C as received.
Stability:	Stable for 12 months from date of receipt.
Predicted Protein Size:	49 kDa
Gene Name:	iroquois homeobox 2
Database Link:	NP_150366 Entrez Gene 16372 Mouse Q9BZ11
Background:	The function of this protein remains unknown.
Synonyms:	IRXA2
Note:	Immunogen Sequence Homology: Mouse: 100%; Dog: 93%; Pig: 93%; Rat: 93%; Horse: 93%; Bovine: 93%; Guinea pig: 93%; Human: 86%
Protein Families:	Transcription Factors



[View online »](#)

Product images:



WB Suggested Anti-Irx2 Antibody Titration: 0.2-1 ug/ml; ELISA Titer: 1:312500; Positive Control: Mouse Spleen