

Product datasheet for **TA342266**

HOXA1 Rabbit Polyclonal Antibody

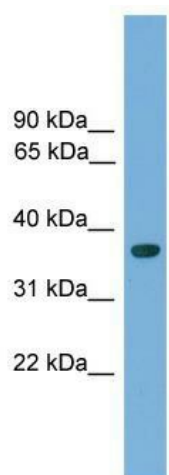
Product data:

Product Type:	Primary Antibodies
Applications:	WB
Recommended Dilution:	WB
Reactivity:	Mouse
Host:	Rabbit
Isotype:	IgG
Clonality:	Polyclonal
Immunogen:	The immunogen for anti-Hoxa1 antibody: synthetic peptide directed towards the c terminal of mouse Hoxa1. Synthetic peptide located within the following region: ETQVKIWFQNRRMKQKKREKEGLLPISPATPPGSDEKTEESSEKSSPSPS
Formulation:	Liquid. Purified antibody supplied in 1x PBS buffer with 0.09% (w/v) sodium azide and 2% sucrose. <i>Note that this product is shipped as lyophilized powder to China customers.</i>
Conjugation:	Unconjugated
Storage:	Store at -20°C as received.
Stability:	Stable for 12 months from date of receipt.
Predicted Protein Size:	36 kDa
Gene Name:	homeobox A1
Database Link:	NP_005513 Entrez Gene 15394 Mouse P49639
Background:	The function of this protein remains unknown.
Synonyms:	BSAS; HOX1; HOX1F
Note:	Immunogen Sequence Homology: Rat: 100%; Mouse: 100%; Pig: 93%; Guinea pig: 93%; Dog: 86%; Horse: 86%; Human: 86%; Bovine: 86%; Rabbit: 86%
Protein Families:	Druggable Genome, Transcription Factors



[View online »](#)

Product images:



WB Suggested Anti-Hoxa1 Antibody Titration: 0.2-1 ug/ml; Positive Control: Mouse Small Intestine