

Product datasheet for **TA342264**

FOXA2 Rabbit Polyclonal Antibody

Product data:

Product Type:	Primary Antibodies
Applications:	WB
Recommended Dilution:	WB
Reactivity:	Mouse
Host:	Rabbit
Isotype:	IgG
Clonality:	Polyclonal
Immunogen:	The immunogen for anti-Foxa2 antibody: synthetic peptide directed towards the middle region of mouse Foxa2. Synthetic peptide located within the following region: SSGGKKTAPGSQASQAQLGEEAAGSASETPAGTESPHSSASPCQEHKRGGL
Formulation:	Liquid. Purified antibody supplied in 1x PBS buffer with 0.09% (w/v) sodium azide and 2% sucrose. <i>Note that this product is shipped as lyophilized powder to China customers.</i>
Conjugation:	Unconjugated
Storage:	Store at -20°C as received.
Stability:	Stable for 12 months from date of receipt.
Predicted Protein Size:	48 kDa
Gene Name:	forkhead box A2
Database Link:	NP_710141 Entrez Gene 15376 Mouse Q9Y261
Background:	Foxa2 is a transcription factor that is involved in embryonic development, establishment of tissue-specific gene expression and regulation of gene expression in differentiated tissues. Foxa2 is thought to act as a 'pioneer' factor opening the compacted chromatin for other proteins through interactions with nucleosomal core histones and thereby replacing linker histones at target enhancer and/or promoter sites. Foxa2 binds DNA with the consensus sequence 5'-[AC]A[AT]T[AG]TT[GT][AG][CT]T[CT]-3'. In embryonic development Foxa2 is required for notochord formation. Foxa2 is involved in the development of multiple endoderm-derived organ systems such as the liver, pancreas and lungs.



[View online »](#)

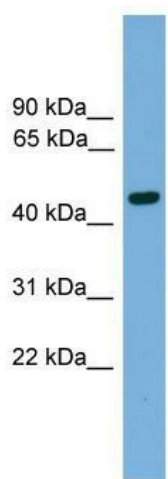
Synonyms: HNF3B; TCF3B

Note: Immunogen Sequence Homology: Rat: 100%; Human: 100%; Mouse: 100%; Dog: 93%; Pig: 93%; Bovine: 93%; Horse: 86%; Rabbit: 86%; Guinea pig: 86%

Protein Families: Embryonic stem cells, ES Cell Differentiation/IPS, Induced pluripotent stem cells, Transcription Factors

Protein Pathways: Maturity onset diabetes of the young

Product images:



WB Suggested Anti-Foxa2 Antibody Titration: 0.2-1 ug/ml; Positive Control: Mouse Thymus