

Product datasheet for **TA342261**

HIRA Rabbit Polyclonal Antibody

Product data:

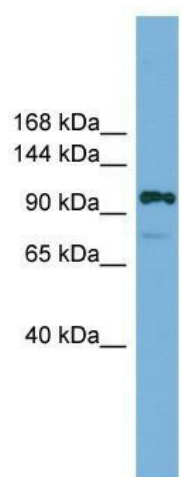
Product Type:	Primary Antibodies
Applications:	WB
Recommended Dilution:	WB
Reactivity:	Mouse
Host:	Rabbit
Isotype:	IgG
Clonality:	Polyclonal
Immunogen:	The immunogen for anti-Hira antibody: synthetic peptide directed towards the middle region of mouse Hira. Synthetic peptide located within the following region: LRSRELESSSDSDEKVLAKPSSLSKRKLELEVETVEKKKKGRPRKDSRL
Formulation:	Liquid. Purified antibody supplied in 1x PBS buffer with 0.09% (w/v) sodium azide and 2% sucrose. <i>Note that this product is shipped as lyophilized powder to China customers.</i>
Conjugation:	Unconjugated
Storage:	Store at -20°C as received.
Stability:	Stable for 12 months from date of receipt.
Predicted Protein Size:	112 kDa
Gene Name:	histone cell cycle regulator
Database Link:	NP_003316 Entrez Gene 15260 Mouse P54198
Background:	Hira is required for the periodic repression of histone gene transcription during the cell cycle. Hira cooperates with ASF1A to promote replication-independent chromatin assembly. Hira is required for the formation of senescence-associated heterochromatin foci (SAHF) and efficient senescence-associated cell cycle exit.
Synonyms:	DGCR1; TUP1; TUPLE1
Note:	Immunogen Sequence Homology: Rat: 100%; Mouse: 100%; Pig: 93%; Rabbit: 93%; Guinea pig: 93%; Human: 86%; Dog: 79%; Horse: 79%



[View online »](#)

Protein Families: Transcription Factors

Product images:



WB Suggested Anti-Hira Antibody Titration: 0.2-1 ug/ml; Positive Control: Mouse Brain