

Product datasheet for **TA342260**

FOX1 Rabbit Polyclonal Antibody

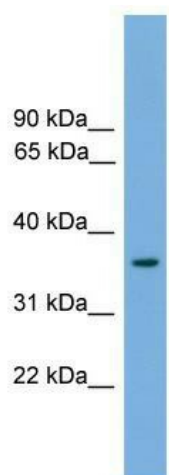
Product data:

Product Type:	Primary Antibodies
Applications:	IHC, WB
Recommended Dilution:	WB, IHC
Reactivity:	Mouse
Host:	Rabbit
Isotype:	IgG
Clonality:	Polyclonal
Immunogen:	The immunogen for anti-Foxf1a antibody: synthetic peptide directed towards the middle region of mouse Foxf1a. Synthetic peptide located within the following region: GCGGSAAGEYPHHDSSVPASPLLPAAGAGGVMEPHAVYSSSAAAWPPAASA
Formulation:	Liquid. Purified antibody supplied in 1x PBS buffer with 0.09% (w/v) sodium azide and 2% sucrose. <i>Note that this product is shipped as lyophilized powder to China customers.</i>
Conjugation:	Unconjugated
Storage:	Store at -20°C as received.
Stability:	Stable for 12 months from date of receipt.
Predicted Protein Size:	38 kDa
Gene Name:	forkhead box F1
Database Link:	NP_001442 Entrez Gene 15227 Mouse Q12946
Background:	Probable transcription activator for a number of lung-specific genes.
Synonyms:	ACDMPV; FKHL5; FREAC1
Note:	Immunogen Sequence Homology: Rat: 100%; Mouse: 100%; Dog: 93%; Pig: 93%; Horse: 93%; Human: 93%; Guinea pig: 93%; Bovine: 86%; Rabbit: 86%; Zebrafish: 77%
Protein Families:	Transcription Factors



[View online »](#)

Product images:



WB Suggested Anti-Foxf1a Antibody Titration: 0.2-1 ug/ml; ELISA Titer: 1:312500; Positive Control: Mouse Heart



Sample Type: Mouse E 18.5 Gut; Dilution: 1:1000