

## Product datasheet for **TA342257**

### Eomes Rabbit Polyclonal Antibody

#### Product data:

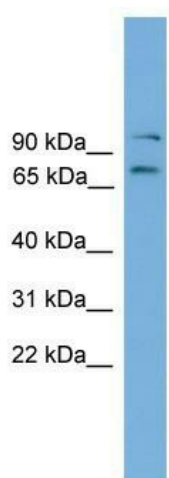
Product Type:	Primary Antibodies
Applications:	IHC, WB
Recommended Dilution:	WB, IHC
Reactivity:	Mouse, Human
Host:	Rabbit
Isotype:	IgG
Clonality:	Polyclonal
Immunogen:	The immunogen for anti-Eomes antibody: synthetic peptide directed towards the C terminal of human Eomes. Synthetic peptide located within the following region: SSDSGVYNSACKRKRLSPSTPSNGNSPPIKCEDINTEEYSKDTSKGMGAY
Formulation:	Liquid. Purified antibody supplied in 1x PBS buffer with 0.09% (w/v) sodium azide and 2% sucrose.
Conjugation:	Unconjugated
Storage:	Store at -20°C as received.
Stability:	Stable for 12 months from date of receipt.
Predicted Protein Size:	75 kDa
Gene Name:	eomesodermin
Database Link:	<a href="#">NP_034266</a> <a href="#">Entrez Gene 8320 Human</a> <a href="#">Entrez Gene 13813 Mouse</a> <a href="#">O54839</a>
Background:	Eomes functions as a transcriptional activator playing a crucial role during development. Eomes functions in trophoblast differentiation and later in gastrulation, regulating both mesoderm delamination and endoderm specification. Eomes plays a role in brain development being required for the specification and the proliferation of the intermediate progenitor cells and their progeny in the cerebral cortex. Eomes also involved in the differentiation of CD8+ T-cells during immune response regulating the expression of lytic effector genes.
Synonyms:	eomesodermin; TBR2



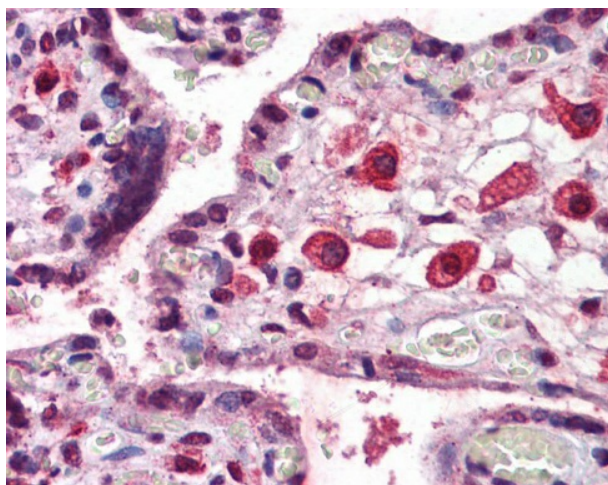
[View online »](#)

**Note:** Immunogen Sequence Homology: Mouse: 100%; Rat: 87%; Dog: 80%; Pig: 80%; Bovine: 80%; Guinea pig: 80%

**Product images:**



WB Suggested Anti-Eomes Antibody Titration: 0.2-1 ug/ml; Positive Control: Mouse Muscle



Immunohistochemistry with Placenta tissue at an antibody concentration of Dilution: 1:200 using anti-Eomes antibody