

Product datasheet for **TA342256**

ELF5 Rabbit Polyclonal Antibody

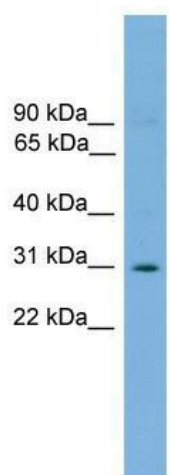
Product data:

Product Type:	Primary Antibodies
Applications:	WB
Recommended Dilution:	WB
Reactivity:	Mouse
Host:	Rabbit
Isotype:	IgG
Clonality:	Polyclonal
Immunogen:	The immunogen for anti-Elf5 antibody: synthetic peptide directed towards the middle region of mouse Elf5. Synthetic peptide located within the following region: AGICGEYLYFILQNIRSQGYSFFNDAEETKTGIKDYADSSCLKTSGIKSQ
Formulation:	Liquid. Purified antibody supplied in 1x PBS buffer with 0.09% (w/v) sodium azide and 2% sucrose. <i>Note that this product is shipped as lyophilized powder to China customers.</i>
Conjugation:	Unconjugated
Storage:	Store at -20°C as received.
Stability:	Stable for 12 months from date of receipt.
Predicted Protein Size:	30 kDa
Gene Name:	E74 like ETS transcription factor 5
Database Link:	NP_001413 Entrez Gene 13711 Mouse Q9UKW6
Background:	Elf5 is a transcriptionally activator that may play a role in regulating the later stages of keratinocytes terminal differentiation. Elf5 binds to DNA sequences containing the consensus nucleotide core sequence GGA[AT]. Elf5 transcriptionally activates the TK promoter.
Synonyms:	ESE2
Note:	Immunogen Sequence Homology: Pig: 100%; Rat: 100%; Mouse: 100%; Horse: 92%; Human: 92%; Rabbit: 92%; Dog: 86%; Bovine: 86%; Guinea pig: 85%
Protein Families:	Transcription Factors



[View online »](#)

Product images:



WB Suggested Anti-Elf5 Antibody Titration: 0.2-1 ug/ml; Positive Control: Mouse Kidney