

Product datasheet for **TA342254**

Cdx1 Rabbit Polyclonal Antibody

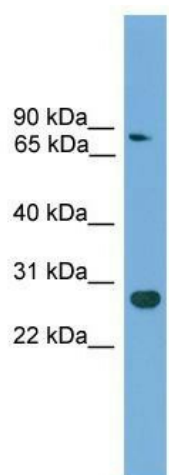
Product data:

Product Type:	Primary Antibodies
Applications:	WB
Recommended Dilution:	WB
Reactivity:	Mouse
Host:	Rabbit
Isotype:	IgG
Clonality:	Polyclonal
Immunogen:	The immunogen for anti-Cdx1 antibody: synthetic peptide directed towards the c terminal of mouse Cdx1. Synthetic peptide located within the following region: QQQLPPTQLPLPLDGTPTSPGPPLGSLCPTNAGLLGTPSPVPVKEEFLP
Formulation:	Liquid. Purified antibody supplied in 1x PBS buffer with 0.09% (w/v) sodium azide and 2% sucrose. <i>Note that this product is shipped as lyophilized powder to China customers.</i>
Conjugation:	Unconjugated
Storage:	Store at -20°C as received.
Stability:	Stable for 12 months from date of receipt.
Predicted Protein Size:	28 kDa
Gene Name:	caudal type homeobox 1
Database Link:	NP_034010 Entrez Gene 12590 Mouse P18111
Background:	Could play a role in the terminal differentiation of the intestine.
Synonyms:	MGC116915
Note:	Immunogen Sequence Homology: Rat: 100%; Mouse: 100%; Rabbit: 86%; Pig: 79%; Horse: 79%; Bovine: 79%



[View online »](#)

Product images:



WB Suggested Anti-Cdx1 Antibody Titration: 0.2-1 ug/ml; Positive Control: Mouse Muscle