

## Product datasheet for **TA342250**

### NIT1 Rabbit Polyclonal Antibody

#### Product data:

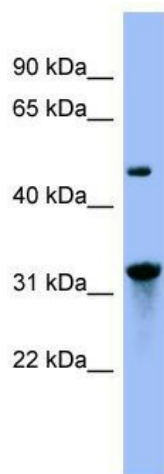
Product Type:	Primary Antibodies
Applications:	WB
Recommended Dilution:	WB
Reactivity:	Human
Host:	Rabbit
Isotype:	IgG
Clonality:	Polyclonal
Immunogen:	The immunogen for anti-NIT1 antibody: synthetic peptide directed towards the N terminal of human NIT1. Synthetic peptide located within the following region: VREAARLGACLAFLPEAFDFIARDPAETLHLSEPLGGKLLLEEYQLAREC
Formulation:	Liquid. Purified antibody supplied in 1x PBS buffer with 0.09% (w/v) sodium azide and 2% sucrose. <i>Note that this product is shipped as lyophilized powder to China customers.</i>
Concentration:	lot specific
Purification:	Affinity Purified
Conjugation:	Unconjugated
Storage:	Store at -20°C as received.
Stability:	Stable for 12 months from date of receipt.
Predicted Protein Size:	36 kDa
Gene Name:	nitrilase 1
Database Link:	<a href="#">NP_005591</a> <a href="#">Entrez Gene 4817 Human</a> <a href="#">Q86X76</a>
Background:	This gene encodes a member ofThe nitrilase protein family with homology to bacterial and plant nitrilases, enzymes that cleave nitriles and organic amides toThe corresponding carboxylic acids plus ammonia. Multiple transcript variants encoding different isoforms have been found forThis gene. [provided by RefSeq, Jun 2010]
Synonyms:	MGC57670



[View online »](#)

**Note:** Immunogen Sequence Homology: Human: 100%; Pig: 93%; Dog: 86%; Bovine: 86%; Rat: 79%; Horse: 79%; Rabbit: 79%; Guinea pig: 79%

### Product images:



WB Suggested Anti-NIT1 Antibody Titration: 0.2-1 ug/ml; ELISA Titer: 1:312500; Positive Control: 293T cell lysate NIT1 is supported by BioGPS gene expression data to be expressed in HEK293T