

Product datasheet for **TA342248**

MRE11 Rabbit Polyclonal Antibody

Product data:

Product Type:	Primary Antibodies
Applications:	WB
Recommended Dilution:	WB
Reactivity:	Human
Host:	Rabbit
Isotype:	IgG
Clonality:	Polyclonal
Immunogen:	The immunogen for anti-MRE11A antibody: synthetic peptide directed towards the middle region of human MRE11A. Synthetic peptide located within the following region: RFRETRQKNTNEEDDEVREAMTRARALRSQSEESASAFSADDLMSIDLAE
Formulation:	Liquid. Purified antibody supplied in 1x PBS buffer with 0.09% (w/v) sodium azide and 2% sucrose. <i>Note that this product is shipped as lyophilized powder to China customers.</i>
Concentration:	lot specific
Purification:	Affinity Purified
Conjugation:	Unconjugated
Storage:	Store at -20°C as received.
Stability:	Stable for 12 months from date of receipt.
Predicted Protein Size:	80 kDa
Gene Name:	MRE11 homolog A, double strand break repair nuclease
Database Link:	NP_005582 Entrez Gene 4361 Human P49959



[View online »](#)

Background: This gene encodes a nuclear protein involved in homologous recombination, telomere length maintenance, and DNA double-strand break repair. By itself, The protein has 3' to 5' exonuclease activity and endonuclease activity. The protein forms a complex with The RAD50 homolog; This complex is required for nonhomologous joining of DNA ends and possesses increased single-stranded DNA endonuclease and 3' to 5' exonuclease activities. In conjunction with a DNA ligase, This protein promotes The joining of noncomplementary ends in vitro using short homologies near The ends of The DNA fragments. This gene has a pseudogene on chromosome 3. Alternative splicing of This gene results in two transcript variants encoding different isoforms. [provided by RefSeq, Jul 2008]

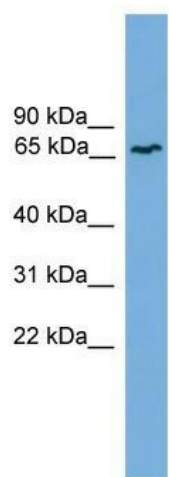
Synonyms: ATLD; HNGS1; MRE11; MRE11B

Note: Immunogen Sequence Homology: Human: 100%; Dog: 93%; Pig: 93%; Horse: 93%; Bovine: 93%; Rat: 86%; Mouse: 86%; Rabbit: 86%; Guinea pig: 86%

Protein Families: Druggable Genome, Stem cell - Pluripotency

Protein Pathways: Homologous recombination, Non-homologous end-joining

Product images:



WB Suggested Anti-MRE11A Antibody Titration:
0.2-1 ug/ml; ELISA Titer: 1:12500; Positive Control:
PANC1 cell lysate