

## Product datasheet for **TA342244**

### NBL1 Rabbit Polyclonal Antibody

#### Product data:

Product Type:	Primary Antibodies
Applications:	WB
Recommended Dilution:	WB
Reactivity:	Human
Host:	Rabbit
Isotype:	IgG
Clonality:	Polyclonal
Immunogen:	The immunogen for anti-NBL1 antibody: synthetic peptide directed towards the middle region of human NBL1. Synthetic peptide located within the following region: GLSVYVQGEDGPGSQPGTHPHPHPHPHGGQTPEPEDPPGAPHTEEEGAE
Formulation:	Liquid. Purified antibody supplied in 1x PBS buffer with 0.09% (w/v) sodium azide and 2% sucrose. <i>Note that this product is shipped as lyophilized powder to China customers.</i>
Concentration:	lot specific
Purification:	Affinity Purified
Conjugation:	Unconjugated
Storage:	Store at -20°C as received.
Stability:	Stable for 12 months from date of receipt.
Predicted Protein Size:	18 kDa
Gene Name:	neuroblastoma 1, DAN family BMP antagonist
Database Link:	<a href="#">NP_005371</a> <a href="#">Entrez Gene 4681 Human P41271</a>



[View online »](#)

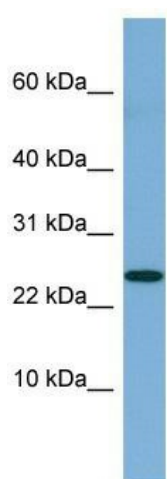
**Background:** This gene product is the founding member of the evolutionarily conserved CAN (Cerberus and DAN) family of proteins, which contain a domain resembling the CTCK (C-terminal cystine knot-like) motif found in a number of signaling molecules. These proteins are secreted, and act as BMP (bone morphogenetic protein) antagonists by binding to BMPs and preventing them from interacting with their receptors. They may thus play an important role during growth and development. Alternatively spliced transcript variants have been identified for this gene. Read-through transcripts between this locus and the upstream mitochondrial inner membrane organizing system 1 gene (GeneID 440574) have been observed. [provided by RefSeq, May 2013]

**Synonyms:** D1S1733E; DAN; DAND1; NB; NO3

**Note:** Immunogen Sequence Homology: Dog: 100%; Pig: 100%; Horse: 100%; Human: 100%; Bovine: 100%; Mouse: 93%; Rabbit: 93%; Rat: 86%

**Protein Families:** Secreted Protein

### Product images:



WB Suggested Anti-NBL1 Antibody Titration: 0.2-1 ug/ml; ELISA Titer: 1:312500; Positive Control: Human Lung