

## Product datasheet for **TA342243**

### MPP2 Rabbit Polyclonal Antibody

#### Product data:

Product Type:	Primary Antibodies
Applications:	WB
Recommended Dilution:	WB
Reactivity:	Rat
Host:	Rabbit
Isotype:	IgG
Clonality:	Polyclonal
Immunogen:	The immunogen for Anti-Mpp2 antibody is: synthetic peptide directed towards the C-terminal region of Rat Mpp2. Synthetic peptide located within the following region: ADLRRTVEESSRIQRGYGHYFDLSLVNSNLERTFRELQTAMEKLRTEPQW
Formulation:	Liquid. Purified antibody supplied in 1x PBS buffer with 0.09% (w/v) sodium azide and 2% sucrose. <i>Note that this product is shipped as lyophilized powder to China customers.</i>
Concentration:	lot specific
Purification:	Affinity Purified
Conjugation:	Unconjugated
Storage:	Store at -20°C as received.
Stability:	Stable for 12 months from date of receipt.
Predicted Protein Size:	60 kDa
Gene Name:	membrane palmitoylated protein 2
Database Link:	<a href="#">NP_005365</a> <a href="#">Entrez Gene 85275 Rat</a> <a href="#">Q14168</a>



[View online »](#)

**Background:**

a protein related to CASK that may play a role in synaptic vesicle exocytosis and synaptic junctions [RGD, Feb 2006]. Sequence Note: The RefSeq transcript and protein were derived from genomic sequence to make the sequence consistent with the reference genome assembly. The genomic coordinates used for the transcript record were based on alignments. ##Evidence-Data-START## Transcript exon combination :: FQ211962.1 [ECO:0000332] RNAseq introns :: mixed/partial sample support ERS160522, ERS160537 [ECO:0000350] ##Evidence-Data-END##

**Synonyms:**

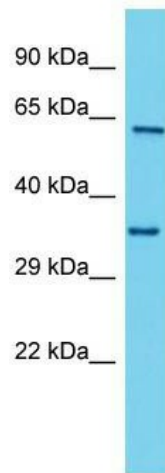
DLG2

**Note:**

Immunogen Sequence Homology: Rat: 100%; Human: 100%; Mouse: 100%; Pig: 93%; Horse: 93%; Bovine: 93%; Rabbit: 93%; Dog: 86%; Guinea pig: 86%

**Protein Families:**

Druggable Genome

**Product images:**

Host: Rabbit; Target Name: Mpp2; Sample Tissue: Rat Stomach lysates; Antibody Dilution: 1.0 ug/ml