

Product datasheet for **TA342241**

MOS Rabbit Polyclonal Antibody

Product data:

| | |
|-------------------------|---|
| Product Type: | Primary Antibodies |
| Applications: | WB |
| Recommended Dilution: | WB |
| Reactivity: | Human |
| Host: | Rabbit |
| Isotype: | IgG |
| Clonality: | Polyclonal |
| Immunogen: | The immunogen for anti-MOS antibody: synthetic peptide directed towards the middle region of human MOS. Synthetic peptide located within the following region: LNVARLRHLDNIVRVVAASTRTPAGSNSLGTIIMEFGGNVTLHQVIYGAAG |
| Formulation: | Liquid. Purified antibody supplied in 1x PBS buffer with 0.09% (w/v) sodium azide and 2% sucrose. <i>Note that this product is shipped as lyophilized powder to China customers.</i> |
| Concentration: | lot specific |
| Purification: | Affinity Purified |
| Conjugation: | Unconjugated |
| Storage: | Store at -20°C as received. |
| Stability: | Stable for 12 months from date of receipt. |
| Predicted Protein Size: | 38 kDa |
| Gene Name: | v-mos Moloney murine sarcoma viral oncogene homolog |
| Database Link: | NP_005363 Entrez Gene 4342 Human P00540 |



[View online »](#)

Background: MOS is a serine/threonine kinase that activates The MAP kinase cascade through direct phosphorylation of The MAP kinase activator MEK (MAP2K1; MIM 176872) (Prasad et al., 2008 [PubMed 18246541]). [supplied by OMIM, Jul 2009]. Publication Note: This RefSeq record includes a subset of The publications that are available for This gene. Please see The Gene record to access additional publications. ##Evidence-Data-START## Transcript is intronless :: BC069569.1, BC069590.1 [ECO:0000345] ##Evidence-Data-END##

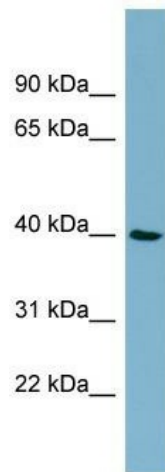
Synonyms: MSV

Note: Immunogen Sequence Homology: Dog: 100%; Pig: 100%; Rat: 100%; Human: 100%; Mouse: 100%; Rabbit: 93%; Bovine: 92%; Guinea pig: 86%

Protein Families: Druggable Genome, Protein Kinase

Protein Pathways: MAPK signaling pathway, Oocyte meiosis, Progesterone-mediated oocyte maturation, Regulation of actin cytoskeleton

Product images:



WB Suggested Anti-MOS Antibody Titration: 0.2-1 ug/ml; ELISA Titer: 1:12500; Positive Control: NCI-H226 cell lysate MOS is supported by BioGPS gene expression data to be expressed in NCIH226