

## Product datasheet for **TA342236**

### **T Plastin (PLS3) Rabbit Polyclonal Antibody**

#### **Product data:**

|                         |  |
|-------------------------|--|
| Product Type:           | Primary Antibodies   |
| Applications:           | WB   |
| Recommended Dilution:   | WB   |
| Reactivity:             | Human  |
| Host:                   | Rabbit   |
| Isotype:                | IgG  |
| Clonality:              | Polyclonal   |
| Immunogen:              | The immunogen for anti-PLS3 antibody: synthetic peptide directed towards the middle region of human PLS3. Synthetic peptide located within the following region:<br>RRYTLNVLEDLG DGQKANDDIIVNWNRTLSEAGKSTSIQSFKDKTISSS |
| Formulation:            | Liquid. Purified antibody supplied in 1x PBS buffer with 0.09% (w/v) sodium azide and 2% sucrose.<br><i>Note that this product is shipped as lyophilized powder to China customers.</i>                                |
| Concentration:          | lot specific   |
| Purification:           | Affinity Purified  |
| Conjugation:            | Unconjugated   |
| Storage:                | Store at -20°C as received.  |
| Stability:              | Stable for 12 months from date of receipt.   |
| Predicted Protein Size: | 71 kDa   |
| Gene Name:              | plastin 3  |
| Database Link:          | <a href="#">NP_005023</a><br><a href="#">Entrez Gene 5358 Human</a><br><a href="#">P13797</a>  |



[View online »](#)

**Background:**

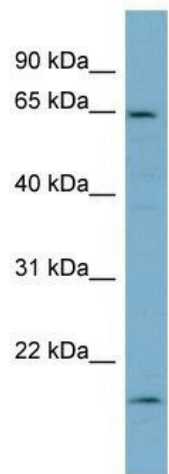
Plastins are a family of actin-binding proteins that are conserved throughout eukaryote evolution and expressed in most tissues of higher eukaryotes. In humans, two ubiquitous plastin isoforms (L and T) have been identified. Plastin 1 (otherwise known as Fimbrin) is a third distinct plastin isoform which is specifically expressed at high levels in the small intestine. The L isoform is expressed only in hemopoietic cell lineages, while the T isoform has been found in all other normal cells of solid tissues that have replicative potential (fibroblasts, endothelial cells, epithelial cells, melanocytes, etc.). The C-terminal 570 amino acids of the T-plastin and L-plastin proteins are 83% identical. It contains a potential calcium-binding site near the N terminus. Alternate splicing results in multiple transcript variants. [provided by RefSeq, Feb 2010]

**Synonyms:**

BMND18; T-plastin

**Note:**

Immunogen Sequence Homology: Dog: 100%; Pig: 100%; Rat: 100%; Horse: 100%; Human: 100%; Mouse: 100%; Bovine: 100%; Rabbit: 100%; Guinea pig: 93%; Yeast: 77%

**Product images:**


WB Suggested Anti-PLS3 Antibody Titration: 0.2-1 ug/ml; ELISA Titer: 1:62500; Positive Control: HT1080 cell lysate. PLS3 is supported by BioGPS gene expression data to be expressed in HT1080