

## Product datasheet for **TA342234**

### PIP5K2 alpha (PIP4K2A) Rabbit Polyclonal Antibody

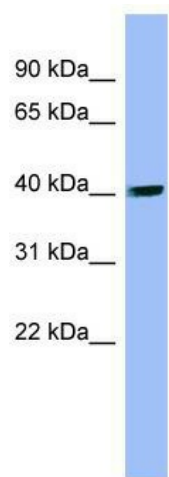
#### Product data:

Product Type:	Primary Antibodies
Applications:	WB
Recommended Dilution:	WB
Reactivity:	Human
Host:	Rabbit
Isotype:	IgG
Clonality:	Polyclonal
Immunogen:	The immunogen for anti-PIP4K2A antibody: synthetic peptide directed towards the N terminal of human PIP4K2A. Synthetic peptide located within the following region: IDDQDFQNSLTRSAPLPNDSQARSGARFHTSYDKRYIIKTITSEDVAEMH
Formulation:	Liquid. Purified antibody supplied in 1x PBS buffer with 0.09% (w/v) sodium azide and 2% sucrose. <i>Note that this product is shipped as lyophilized powder to China customers.</i>
Concentration:	lot specific
Purification:	Affinity Purified
Conjugation:	Unconjugated
Storage:	Store at -20°C as received.
Stability:	Stable for 12 months from date of receipt.
Predicted Protein Size:	46 kDa
Gene Name:	phosphatidylinositol-5-phosphate 4-kinase type 2 alpha
Database Link:	<a href="#">NP_005019</a> <a href="#">Entrez Gene 5305 Human</a> <a href="#">P48426</a>



[View online »](#)

<b>Background:</b>	Phosphatidylinositol-5,4-bisphosphate,The precursor to second messengers ofThe phosphoinositide signal transduction pathways, is thought to be involved inThe regulation of secretion, cell proliferation, differentiation, and motility.The protein encoded byThis gene is one of a family of enzymes capable of catalyzingThe phosphorylation of phosphatidylinositol-5-phosphate onThe fourth hydroxyl ofThe myo-inositol ring to form phosphatidylinositol-5,4-bisphosphate.The amino acid sequence ofThis enzyme does not show homology to other kinases, butThe recombinant protein does exhibit kinase activity.This gene is a member ofThe phosphatidylinositol-5-phosphate 4-kinase family. [provided by RefSeq, Jul 2008]
<b>Synonyms:</b>	PI5P4KA; PIP5K2A; PIP5KII-alpha; PIP5KIIA; PIPK
<b>Note:</b>	Immunogen Sequence Homology: Dog: 100%; Pig: 100%; Rat: 100%; Horse: 100%; Human: 100%; Mouse: 100%; Bovine: 100%; Rabbit: 100%; Guinea pig: 100%
<b>Protein Families:</b>	Druggable Genome
<b>Protein Pathways:</b>	Inositol phosphate metabolism, Phosphatidylinositol signaling system, Regulation of actin cytoskeleton

**Product images:**

WB Suggested Anti-PIP4K2A Antibody Titration:  
0.2-1 ug/ml; ELISA Titer: 1:62500; Positive Control:  
Human brain