

Product datasheet for **TA342231**

OMD Rabbit Polyclonal Antibody

Product data:

| | |
|-------------------------|--|
| Product Type: | Primary Antibodies |
| Applications: | WB |
| Recommended Dilution: | WB |
| Reactivity: | Human |
| Host: | Rabbit |
| Isotype: | IgG |
| Clonality: | Polyclonal |
| Immunogen: | The immunogen for anti-OMD antibody: synthetic peptide directed towards the middle region of human OMD. Synthetic peptide located within the following region: LLQLHLEHNNLEEFPLPKSLERLLLGYNEISKLQTNAMDGLVNLTMLD |
| Formulation: | Liquid. Purified antibody supplied in 1x PBS buffer with 0.09% (w/v) sodium azide and 2% sucrose. <i>Note that this product is shipped as lyophilized powder to China customers.</i> |
| Concentration: | lot specific |
| Purification: | Affinity Purified |
| Conjugation: | Unconjugated |
| Storage: | Store at -20°C as received. |
| Stability: | Stable for 12 months from date of receipt. |
| Predicted Protein Size: | 49 kDa |
| Gene Name: | osteomodulin |
| Database Link: | NP_005005 Entrez Gene 4958 Human Q99983 |
| Background: | OMD may be implicated in biomineralization processes. Has a function in binding of osteoblasts viaThe alpha(V)beta(3)-integrin. |
| Synonyms: | OSAD; SLRR2C |

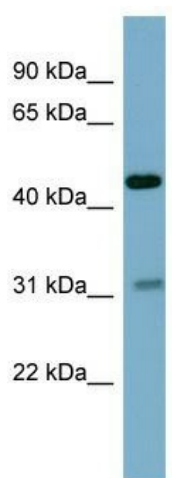


[View online »](#)

Note: Immunogen Sequence Homology: Pig: 100%; Rat: 100%; Human: 100%; Mouse: 100%; Guinea pig: 93%; Rabbit: 92%; Dog: 86%; Bovine: 86%; Horse: 85%; Zebrafish: 79%

Protein Families: Secreted Protein

Product images:



WB Suggested Anti-OMD Antibody Titration: 0.2-1 ug/ml; ELISA Titer: 1:62500; Positive Control: Human Muscle