

Product datasheet for **TA342230**

NDUFS1 Rabbit Polyclonal Antibody

Product data:

Product Type:	Primary Antibodies
Applications:	WB
Recommended Dilution:	WB
Reactivity:	Human, Mouse, Rat
Host:	Rabbit
Isotype:	IgG
Clonality:	Polyclonal
Immunogen:	The immunogen for anti-NDUFS1 antibody: synthetic peptide directed towards the middle region of human NDUFS1. Synthetic peptide located within the following region: TTPGLAREDWKIIRALSEIAGMTLPYDTLDQVRNRLEEVSPLVRYDDIE
Formulation:	Liquid. Purified antibody supplied in 1x PBS buffer with 0.09% (w/v) sodium azide and 2% sucrose. <i>Note that this product is shipped as lyophilized powder to China customers.</i>
Concentration:	lot specific
Purification:	Affinity Purified
Conjugation:	Unconjugated
Storage:	Store at -20°C as received.
Stability:	Stable for 12 months from date of receipt.
Predicted Protein Size:	77 kDa
Gene Name:	NADH:ubiquinone oxidoreductase core subunit S1
Database Link:	NP_004997 Entrez Gene 227197 Mouse Entrez Gene 301458 Rat Entrez Gene 4719 Human P28331



[View online »](#)

Background:

The protein encoded by this gene belongs to the complex I 75 kDa subunit family. Mammalian complex I is composed of 45 different subunits. It is located at the mitochondrial inner membrane. This protein has NADH dehydrogenase activity and oxidoreductase activity. It transfers electrons from NADH to the respiratory chain. The immediate electron acceptor for the enzyme is believed to be ubiquinone. This protein is the largest subunit of complex I and it is a component of the iron-sulfur (IP) fragment of the enzyme. It may form part of the active site crevice where NADH is oxidized. Mutations in this gene are associated with complex I deficiency. Several transcript variants encoding different isoforms have been found for this gene. [provided by RefSeq, Jan 2011]

Synonyms:

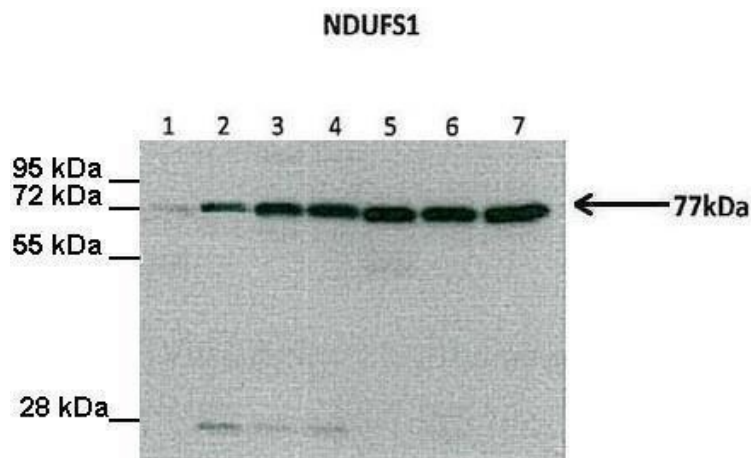
CI-75k; CI-75Kd; PRO1304

Note:

Immunogen Sequence Homology: Rat: 100%; Goat: 100%; Horse: 100%; Human: 100%; Mouse: 100%; Bovine: 100%; Rabbit: 100%; Dog: 93%; Pig: 93%; Guinea pig: 93%; Zebrafish: 79%

Protein Pathways:

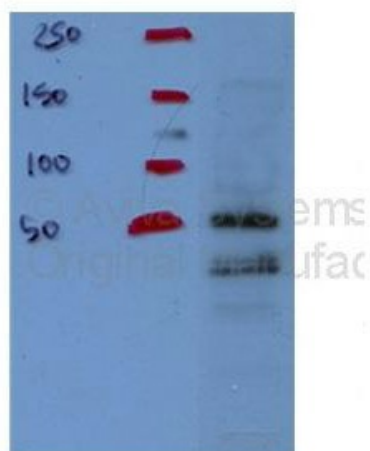
Alzheimer's disease, Huntington's disease, Metabolic pathways, Oxidative phosphorylation, Parkinson's disease

Product images:


Lanes: ; Lane 1: 30 ug Human liver; Lane 2: 30 ug Rat liver; Lane 3: 30 ug Mouse (wild-type) liver; Lane 4: 30 ug Mouse [AMPK alpha 1/2 (-/-)] liver; Lane 5: 30 ug Human muscle; Lane 6: 30 ug Rat muscle; Lane 7: 30 ug Mouse muscle; Primary Antibody Dilution: ; 1:



WB Suggested Anti-NDUFS1 Antibody Titration:
0.2-1 ug/ml ELISA Titer: 1:1562500 Positive
Control: Fetal Liver



nuclear lysates