

Product datasheet for TA342226

MYBPH Rabbit Polyclonal Antibody

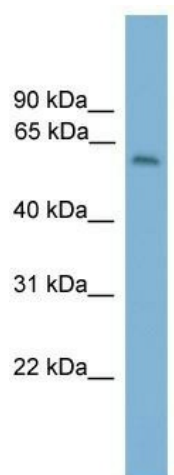
Product data:

Product Type:	Primary Antibodies
Applications:	WB
Recommended Dilution:	WB
Reactivity:	Human
Host:	Rabbit
Isotype:	IgG
Clonality:	Polyclonal
Immunogen:	The immunogen for anti-MYBPH antibody: synthetic peptide directed towards the middle region of human MYBPH. Synthetic peptide located within the following region: APKIRVPRHLRQTYIRQVGETVNLQIPFQGKPKPQATWTHNGHALDSQRV
Formulation:	Liquid. Purified antibody supplied in 1x PBS buffer with 0.09% (w/v) sodium azide and 2% sucrose.
Concentration:	lot specific
Purification:	Affinity Purified
Conjugation:	Unconjugated
Storage:	Store at -20°C as received.
Stability:	Stable for 12 months from date of receipt.
Predicted Protein Size:	52 kDa
Gene Name:	myosin binding protein H
Database Link:	NP_004988 Entrez Gene 4608 Human Q13203
Background:	Binds to myosin; probably involved in interaction with thick myofilaments inThe A-band.
Synonyms:	myosin-binding protein H; myosin binding protein H; OTTHUMP00000039086
Note:	Immunogen Sequence Homology: Human: 100%; Dog: 93%; Pig: 93%; Rat: 93%; Mouse: 93%; Guinea pig: 93%; Horse: 86%; Bovine: 86%; Rabbit: 86%; Zebrafish: 85%



[View online »](#)

Product images:



WB Suggested Anti-MYBPH Antibody Titration:
0.2-1 ug/ml; ELISA Titer: 1:312500; Positive
Control: Human Liver