

Product datasheet for **TA342225**

MYBPH Rabbit Polyclonal Antibody

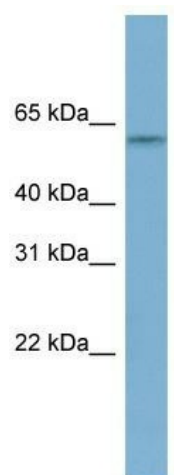
Product data:

Product Type:	Primary Antibodies
Applications:	WB
Recommended Dilution:	WB
Reactivity:	Human
Host:	Rabbit
Isotype:	IgG
Clonality:	Polyclonal
Immunogen:	The immunogen for anti-MYBPH antibody: synthetic peptide directed towards the N terminal of human MYBPH. Synthetic peptide located within the following region: LELCREGASEWVPVSARPMVTQQTVRNALGDKFLLRVSAVSSAGAGPP
Formulation:	Liquid. Purified antibody supplied in 1x PBS buffer with 0.09% (w/v) sodium azide and 2% sucrose.
Concentration:	lot specific
Purification:	Affinity Purified
Conjugation:	Unconjugated
Storage:	Store at -20°C as received.
Stability:	Stable for 12 months from date of receipt.
Predicted Protein Size:	52 kDa
Gene Name:	myosin binding protein H
Database Link:	NP_004988 Entrez Gene 4608 Human Q13203
Background:	Binds to myosin; probably involved in interaction with thick myofilaments inThe A-band.
Synonyms:	myosin-binding protein H; myosin binding protein H; OTTHUMP00000039086
Note:	Immunogen Sequence Homology: Dog: 100%; Pig: 100%; Rat: 100%; Human: 100%; Mouse: 100%; Rabbit: 100%; Horse: 93%; Bovine: 86%; Guinea pig: 86%



[View online »](#)

Product images:



WB Suggested Anti-MYBPH Antibody Titration:
0.2-1 ug/ml; ELISA Titer: 1:62500; Positive Control:
Hela cell lysate