

## Product datasheet for **TA342223**

### SCO1 Rabbit Polyclonal Antibody

#### Product data:

Product Type:	Primary Antibodies
Applications:	WB
Recommended Dilution:	WB
Reactivity:	Human
Host:	Rabbit
Isotype:	IgG
Clonality:	Polyclonal
Immunogen:	The immunogen for anti-SCO1 antibody: synthetic peptide directed towards the middle region of human SCO1. Synthetic peptide located within the following region: ALLAGMKHVKKEKAEKLEKERQRHIGKPLLGGPFLTHTGERKTDKDYL
Formulation:	Liquid. Purified antibody supplied in 1x PBS buffer with 0.09% (w/v) sodium azide and 2% sucrose. <i>Note that this product is shipped as lyophilized powder to China customers.</i>
Concentration:	lot specific
Purification:	Affinity Purified
Conjugation:	Unconjugated
Storage:	Store at -20°C as received.
Stability:	Stable for 12 months from date of receipt.
Predicted Protein Size:	34 kDa
Gene Name:	SCO1 cytochrome c oxidase assembly protein
Database Link:	<a href="#">NP_004580</a> <a href="#">Entrez Gene 6341 Human</a> <a href="#">O75880</a>
Background:	Mammalian cytochrome c oxidase (COX) catalyzesThe transfer of reducing equivalents from cytochrome c to molecular oxygen and pumps protons acrossThe inner mitochondrial membrane. In yeast, 2 related COX assembly genes, SCO1 and SCO2 (synthesis of cytochrome c oxidase), enable subunits 1 and 2 to be incorporated intoThe holoprotein.This gene isThe human homolog toThe yeast SCO1 gene. [provided by RefSeq, Jul 2008]

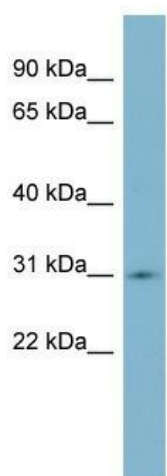


[View online »](#)

Synonyms: SCOD1

Note: Immunogen Sequence Homology: Dog: 100%; Pig: 100%; Rat: 100%; Horse: 100%; Human: 100%; Mouse: 100%; Bovine: 100%; Rabbit: 93%; Guinea pig: 93%; Yeast: 91%

### Product images:



WB Suggested Anti-SCO1 Antibody Titration: 0.2-1 ug/ml; ELISA Titer: 1:62500; Positive Control: Human heart