

Product datasheet for **TA342222**

RAB27A Rabbit Polyclonal Antibody

Product data:

Product Type:	Primary Antibodies
Applications:	WB
Recommended Dilution:	WB
Reactivity:	Human
Host:	Rabbit
Isotype:	IgG
Clonality:	Polyclonal
Immunogen:	The immunogen for anti-RAB27A antibody: synthetic peptide directed towards the middle region of human RAB27A. Synthetic peptide located within the following region: SQAIEMLLDLIMKRMERCVDKSWIPEGVVRNNGHASTDQLSEEKEKGACG
Formulation:	Liquid. Purified antibody supplied in 1x PBS buffer with 0.09% (w/v) sodium azide and 2% sucrose. <i>Note that this product is shipped as lyophilized powder to China customers.</i>
Concentration:	lot specific
Purification:	Affinity Purified
Conjugation:	Unconjugated
Storage:	Store at -20°C as received.
Stability:	Stable for 12 months from date of receipt.
Predicted Protein Size:	25 kDa
Gene Name:	RAB27A, member RAS oncogene family
Database Link:	NP_004571 Entrez Gene 5873 Human P51159
Background:	The protein encoded byThis gene belongs toThe small GTPase superfamily, Rab family.The protein is membrane-bound and may be involved in protein transport and small GTPase mediated signal transduction. Mutations inThis gene are associated with Griscelli syndrome type 2. Alternative splicing occurs atThis locus and four transcript variants encodingThe same protein have been identified. [provided by RefSeq, Jul 2008]



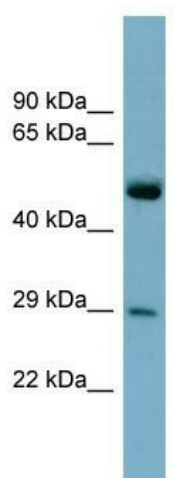
[View online »](#)

Synonyms: GS2; HsT18676; RAB27; RAM

Note: Immunogen Sequence Homology: Human: 100%; Rat: 93%; Mouse: 86%; Goat: 79%; Horse: 79%; Sheep: 79%; Bovine: 79%

Protein Families: Druggable Genome

Product images:



WB Suggested Anti-RAB27A Antibody Titration:
0.2-1 ug/ml; ELISA Titer: 1:312500; Positive
Control: Human Stomach