

Product datasheet for TA342220

Phosphoserine phosphatase (PSPH) Rabbit Polyclonal Antibody

Product data:

Product Type:	Primary Antibodies
Applications:	WB
Recommended Dilution:	WB
Reactivity:	Human
Host:	Rabbit
Isotype:	IgG
Clonality:	Polyclonal
Immunogen:	The immunogen for anti-PSPH antibody: synthetic peptide directed towards the middle region of human PSPH. Synthetic peptide located within the following region: PSREQVQRLIAEQPPHLTPGIRELVSRQLQERNVQVFLISGGFRSIVEHVA
Formulation:	Liquid. Purified antibody supplied in 1x PBS buffer with 0.09% (w/v) sodium azide and 2% sucrose. <i>Note that this product is shipped as lyophilized powder to China customers.</i>
Concentration:	lot specific
Purification:	Affinity Purified
Conjugation:	Unconjugated
Storage:	Store at -20°C as received.
Stability:	Stable for 12 months from date of receipt.
Predicted Protein Size:	25 kDa
Gene Name:	phosphoserine phosphatase
Database Link:	NP_004568 Entrez Gene 5723 Human P78330
Background:	The protein encoded by this gene belongs to a subfamily of the phosphotransferases. This encoded enzyme is responsible for the third and last step in L-serine formation. It catalyzes magnesium-dependent hydrolysis of L-phosphoserine and is also involved in an exchange reaction between L-serine and L-phosphoserine. Deficiency of this protein is thought to be linked to Williams syndrome. [provided by RefSeq, Jul 2008]



[View online »](#)

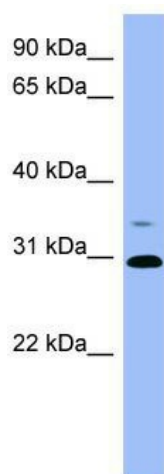
Synonyms: PSP; PSPHD

Note: Immunogen Sequence Homology: Dog: 100%; Pig: 100%; Rat: 100%; Horse: 100%; Human: 100%; Mouse: 100%; Sheep: 100%; Bovine: 100%; Rabbit: 100%; Zebrafish: 92%; Guinea pig: 86%

Protein Families: Druggable Genome, Phosphatase

Protein Pathways: Glycine, serine and threonine metabolism, Metabolic pathways

Product images:



WB Suggested Anti-PSPH Antibody Titration: 0.2-1 ug/ml; ELISA Titer: 1:62500; Positive Control: MCF7 cell lysate