

Product datasheet for **TA342218**

PFKFB4 Rabbit Polyclonal Antibody

Product data:

Product Type:	Primary Antibodies
Applications:	WB
Recommended Dilution:	WB
Reactivity:	Human
Host:	Rabbit
Isotype:	IgG
Clonality:	Polyclonal
Immunogen:	The immunogen for anti-PFKFB4 antibody: synthetic peptide directed towards the N terminal of human PFKFB4. Synthetic peptide located within the following region: MASPRELTQNPLKKIWMPYSNGRPALHACQRGVCMTCPTLIVMVGLPAR
Formulation:	Liquid. Purified antibody supplied in 1x PBS buffer with 0.09% (w/v) sodium azide and 2% sucrose. <i>Note that this product is shipped as lyophilized powder to China customers.</i>
Concentration:	lot specific
Purification:	Affinity Purified
Conjugation:	Unconjugated
Storage:	Store at -20°C as received.
Stability:	Stable for 12 months from date of receipt.
Predicted Protein Size:	54 kDa
Gene Name:	6-phosphofructo-2-kinase/fructose-2,6-biphosphatase 4
Database Link:	NP_004558 Entrez Gene 5210 Human Q16877
Background:	Synthesis and degradation of fructose 2,6-bisphosphate.
Synonyms:	6-biphosphatase-4; 6-biphosphatase 4; 6-phosphofructo-2-kinase; bifunctional enzyme with kinase and biphosphatase activities; fructose-2



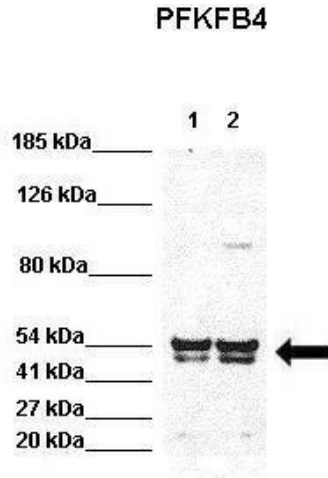
[View online »](#)

Note: Immunogen Sequence Homology: Dog: 100%; Pig: 100%; Rat: 100%; Horse: 100%; Human: 100%; Mouse: 100%; Bovine: 100%; Rabbit: 100%; Zebrafish: 100%; Guinea pig: 100%

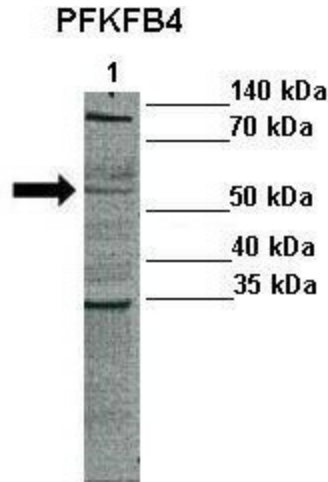
Protein Families: Druggable Genome

Protein Pathways: Fructose and mannose metabolism

Product images:



WB Suggested Anti-PFKFB4 Antibody ; Positive Control: Lane 1: 40ug HEK293 lysate Lane 2: 40ug H1299 lysate; Primary Antibody Dilution : 1:1000; Secondary Antibody : Goat anti-rabbit-HRP; Secondary Antibody Dilution : 1:5000;



WB Suggested Anti-PFKFB4 Antibody ; Positive Control: Lane 1: 10ug human primary tumor lysate; Primary Antibody Dilution : 1:1000; Secondary Antibody : Anti-rabbit-HRP; Secondary Antibody Dilution : 1:5000;