

Product datasheet for **TA342216**

NDUFS3 Rabbit Polyclonal Antibody

Product data:

Product Type:	Primary Antibodies
Applications:	WB
Recommended Dilution:	WB
Reactivity:	Human
Host:	Rabbit
Isotype:	IgG
Clonality:	Polyclonal
Immunogen:	The immunogen for anti-NDUFS3 antibody: synthetic peptide directed towards the middle region of human NDUFS3. Synthetic peptide located within the following region: ANHPDLRRILTDYGFEGHPFRKDFPLSGYVELRYDDEVKRVVAEPVELAQ
Formulation:	Liquid. Purified antibody supplied in 1x PBS buffer with 0.09% (w/v) sodium azide and 2% sucrose. <i>Note that this product is shipped as lyophilized powder to China customers.</i>
Concentration:	lot specific
Purification:	Affinity Purified
Conjugation:	Unconjugated
Storage:	Store at -20°C as received.
Stability:	Stable for 12 months from date of receipt.
Predicted Protein Size:	30 kDa
Gene Name:	NADH:ubiquinone oxidoreductase core subunit S3
Database Link:	NP_004542 Entrez Gene 4722 Human O75489
Background:	This gene encodes one of the iron-sulfur protein (IP) components of mitochondrial NADH:ubiquinone oxidoreductase (complex I). Mutations in this gene are associated with Leigh syndrome resulting from mitochondrial complex I deficiency. [provided by RefSeq, Apr 2009]
Synonyms:	CI-30

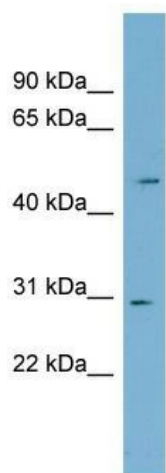


[View online »](#)

Note: Immunogen Sequence Homology: Dog: 100%; Pig: 100%; Rat: 100%; Horse: 100%; Human: 100%; Mouse: 100%; Bovine: 100%; Rabbit: 100%; Zebrafish: 100%; Guinea pig: 100%

Protein Pathways: Alzheimer's disease, Huntington's disease, Metabolic pathways, Oxidative phosphorylation, Parkinson's disease

Product images:



WB Suggested Anti-NDUFS3 Antibody Titration:
0.2-1 ug/ml; Positive Control: PANC1 cell lysate