

Product datasheet for **TA342214**

RRAD Rabbit Polyclonal Antibody

Product data:

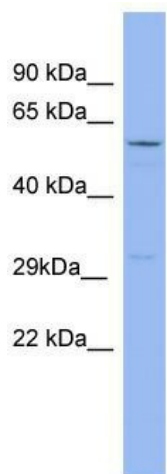
| | |
|-------------------------|---|
| Product Type: | Primary Antibodies |
| Applications: | WB |
| Recommended Dilution: | WB |
| Reactivity: | Human |
| Host: | Rabbit |
| Isotype: | IgG |
| Clonality: | Polyclonal |
| Immunogen: | The immunogen for anti-RRAD antibody: synthetic peptide directed towards the middle region of human RRAD. Synthetic peptide located within the following region: YDIWEQDGGRWLPGHCMAMGDAYVIVYSVTDKGSFEKASELRVQLRRARQ |
| Formulation: | Liquid. Purified antibody supplied in 1x PBS buffer with 0.09% (w/v) sodium azide and 2% sucrose. <i>Note that this product is shipped as lyophilized powder to China customers.</i> |
| Concentration: | lot specific |
| Purification: | Affinity Purified |
| Conjugation: | Unconjugated |
| Storage: | Store at -20°C as received. |
| Stability: | Stable for 12 months from date of receipt. |
| Predicted Protein Size: | 33 kDa |
| Gene Name: | RRAD, Ras related glycolysis inhibitor and calcium channel regulator |
| Database Link: | NP_004156 Entrez Gene 6236 Human P55042 |
| Background: | RRAD may play an important role in cardiac antiarrhythmia viaThe strong suppression of voltage-gated L-type Ca ²⁺ currents. RRAD regulates voltage-dependent L-type calcium channel subunit alpha-1C trafficking toThe cell membrane. RRAD inhibits cardiac hy |
| Synonyms: | RAD; RAD1; REM3 |



[View online »](#)

Note: Immunogen Sequence Homology: Dog: 100%; Rat: 100%; Human: 100%; Bovine: 100%; Rabbit: 100%; Pig: 93%; Horse: 93%; Mouse: 93%; Zebrafish: 93%; Guinea pig: 93%

Product images:



WB Suggested Anti-RRAD Antibody Titration: 0.2-1 ug/ml; ELISA Titer: 1: 1562500; Positive Control: MCF7 cell lysate