

Product datasheet for **TA342213**

RRAD Rabbit Polyclonal Antibody

Product data:

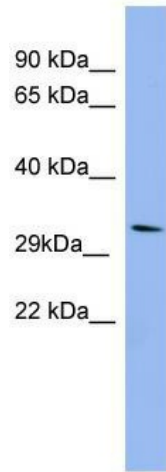
Product Type:	Primary Antibodies
Applications:	WB
Recommended Dilution:	WB
Reactivity:	Human
Host:	Rabbit
Isotype:	IgG
Clonality:	Polyclonal
Immunogen:	The immunogen for anti-RRAD antibody: synthetic peptide directed towards the middle region of human RRAD. Synthetic peptide located within the following region: LARIFGGVEDGPEAEAAGHTYDRSIVDGEELASLMVYDIWEQDGGRWLPG
Formulation:	Liquid. Purified antibody supplied in 1x PBS buffer with 0.09% (w/v) sodium azide and 2% sucrose. <i>Note that this product is shipped as lyophilized powder to China customers.</i>
Concentration:	lot specific
Purification:	Affinity Purified
Conjugation:	Unconjugated
Storage:	Store at -20°C as received.
Stability:	Stable for 12 months from date of receipt.
Predicted Protein Size:	33 kDa
Gene Name:	RRAD, Ras related glycolysis inhibitor and calcium channel regulator
Database Link:	NP_004156 Entrez Gene 6236 Human P55042
Background:	RRAD may play an important role in cardiac antiarrhythmia viaThe strong suppression of voltage-gated L-type Ca ²⁺ currents. RRAD regulates voltage-dependent L-type calcium channel subunit alpha-1C trafficking toThe cell membrane. RRAD inhibits cardiac hy
Synonyms:	RAD; RAD1; REM3



[View online »](#)

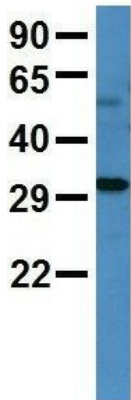
Note: Immunogen Sequence Homology: Dog: 100%; Pig: 100%; Rat: 100%; Human: 100%; Mouse: 100%; Bovine: 100%; Rabbit: 100%; Guinea pig: 100%

Product images:



WB Suggested Anti-RRAD Antibody Titration: 0.2-1 ug/ml; ELISA Titer: 1:312500; Positive Control: HepG2 cell lysate

RRAD



Rabbit Anti-RRAD
 Sample Type: Human Adult Placenta
 Antibody Concentration: 1ug/mL

Host: Rabbit; Target Name: SERPINA3; Sample Tissue: Human Adult Placenta; Antibody Dilution: 1.0 ug/ml