

Product datasheet for TA342212

Rab5 (RAB5A) Rabbit Polyclonal Antibody

Product data:

Product Type:	Primary Antibodies
Applications:	IHC, WB
Recommended Dilution:	WB, IHC
Reactivity:	Human, Mouse, Zebrafish
Host:	Rabbit
Isotype:	IgG
Clonality:	Polyclonal
Immunogen:	The immunogen for anti-RAB5A antibody: synthetic peptide directed towards the middle region of human RAB5A. Synthetic peptide located within the following region: KTSMNVNEIFMAIAKKLPKNPQNPANSARGRGVDLTEPTQPTRNQCCS
Formulation:	Liquid. Purified antibody supplied in 1x PBS buffer with 0.09% (w/v) sodium azide and 2% sucrose. <i>Note that this product is shipped as lyophilized powder to China customers.</i>
Concentration:	lot specific
Purification:	Affinity Purified
Conjugation:	Unconjugated
Storage:	Store at -20°C as received.
Stability:	Stable for 12 months from date of receipt.
Predicted Protein Size:	24 kDa
Gene Name:	RAB5A, member RAS oncogene family
Database Link:	NP_004153 Entrez Gene 271457 Mouse Entrez Gene 5868 Human P20339
Background:	RAB5A is required forThe fusion of plasma membranes and early endosomes.
Synonyms:	RAB5
Note:	Immunogen Sequence Homology: Dog: 100%; Pig: 100%; Rat: 100%; Horse: 100%; Human: 100%; Mouse: 100%; Guinea pig: 100%; Bovine: 93%; Rabbit: 93%; Sheep: 79%

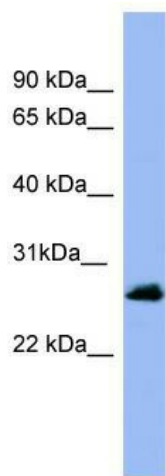


[View online »](#)

Protein Families: Druggable Genome

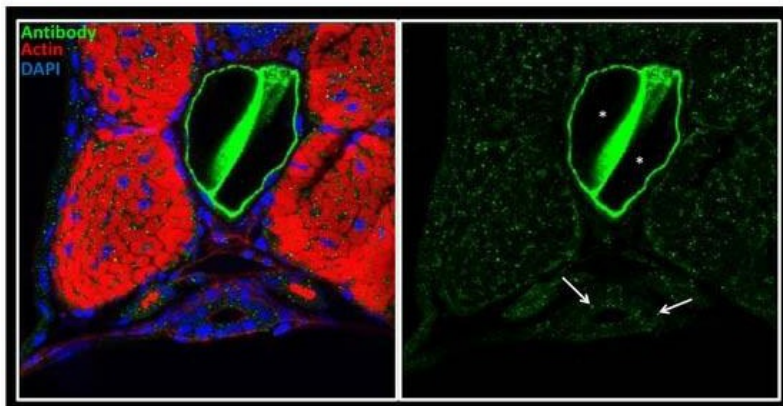
Protein Pathways: Amyotrophic lateral sclerosis (ALS), Endocytosis

Product images:



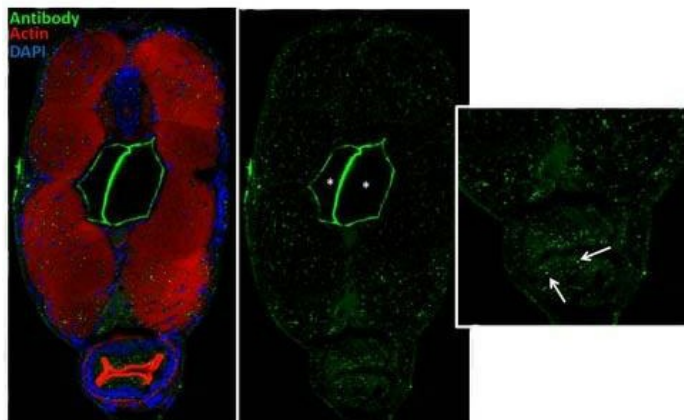
WB Suggested Anti-RAB5A Antibody Titration: 0.2-1 ug/ml; ELISA Titer: 1:1562500; Positive Control: Human Muscle

RAB5A-3dpf



Sample type: zebra gut epithelial cells; Green: primary; Red: actin; Blue: DAPI; Primary dilution: 1:5000; Secondary Dilution: 1:300;

RAB5A-5dpf



Sample type: zebra gut epithelial cells; Green: primary; Red: actin; Blue: DAPI; Primary dilution: 1:5000; Secondary Dilution: 1:300;