

## Product datasheet for TA342211

### Rab5 (RAB5A) Rabbit Polyclonal Antibody

#### Product data:

Product Type:	Primary Antibodies
Applications:	WB
Recommended Dilution:	WB
Reactivity:	Human, Mouse
Host:	Rabbit
Isotype:	IgG
Clonality:	Polyclonal
Immunogen:	The immunogen for anti-RAB5A antibody: synthetic peptide directed towards the middle region of human RAB5A. Synthetic peptide located within the following region: SFARAKNWWKELQRQASPNIVIALSGNKADLANKRAVDFQEAQSYADDNS
Formulation:	Liquid. Purified antibody supplied in 1x PBS buffer with 0.09% (w/v) sodium azide and 2% sucrose. <i>Note that this product is shipped as lyophilized powder to China customers.</i>
Concentration:	lot specific
Purification:	Affinity Purified
Conjugation:	Unconjugated
Storage:	Store at -20°C as received.
Stability:	Stable for 12 months from date of receipt.
Predicted Protein Size:	24 kDa
Gene Name:	RAB5A, member RAS oncogene family
Database Link:	<a href="#">NP_004153</a> <a href="#">Entrez Gene 271457 Mouse</a> <a href="#">Entrez Gene 5868 Human</a> <a href="#">P20339</a>
Background:	RAB5A is required forThe fusion of plasma membranes and early endosomes.
Synonyms:	RAB5



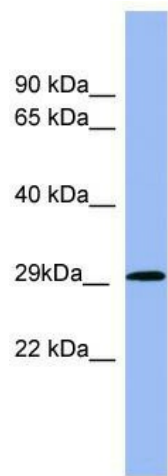
[View online »](#)

**Note:** Immunogen Sequence Homology: Dog: 100%; Pig: 100%; Rat: 100%; Horse: 100%; Human: 100%; Mouse: 100%; Sheep: 100%; Bovine: 100%; Rabbit: 100%; Zebrafish: 93%; Guinea pig: 93%

**Protein Families:** Druggable Genome

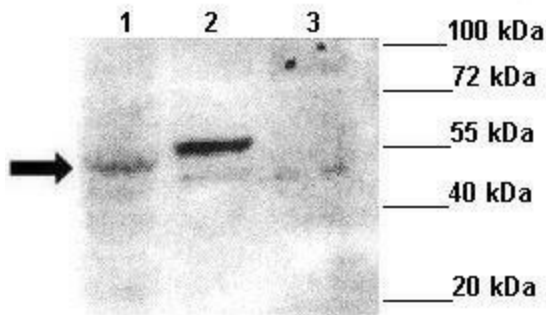
**Protein Pathways:** Amyotrophic lateral sclerosis (ALS), Endocytosis

**Product images:**



WB Suggested Anti-RAB5A Antibody Titration: 0.2-1 ug/ml; ELISA Titer: 1:312500; Positive Control: Human Muscle

**RAB5**



Lanes ;; Lane 1: Mouse C2 cell lysate Lane 2: GFP-Rab5 transfected cos cells Lane 3: GFP-Rab31 transfected cos cells; Primary Antibody Dilution ;; 1:500; Secondary Antibody Dilution ;; Goat anti rabbit-HRP; Secondary Antibody Dilution ;; 1:5000; Gene Name ;; RAB5A;