

Product datasheet for **TA342210**

RAB1A Rabbit Polyclonal Antibody

Product data:

Product Type:	Primary Antibodies
Applications:	IHC, WB
Recommended Dilution:	WB
Reactivity:	Human, Mouse
Host:	Rabbit
Isotype:	IgG
Clonality:	Polyclonal
Immunogen:	The immunogen for anti-RAB1A antibody: synthetic peptide directed towards the middle region of human RAB1A. Synthetic peptide located within the following region: AKNATNVEQSFMTMAAEIKKRMGPGATAGGAEKSNVKIQSTPVKQSGGGC
Formulation:	Liquid. Purified antibody supplied in 1x PBS buffer with 0.09% (w/v) sodium azide and 2% sucrose. <i>Note that this product is shipped as lyophilized powder to China customers.</i>
Concentration:	lot specific
Purification:	Affinity Purified
Conjugation:	Unconjugated
Storage:	Store at -20°C as received.
Stability:	Stable for 12 months from date of receipt.
Predicted Protein Size:	23 kDa
Gene Name:	RAB1A, member RAS oncogene family
Database Link:	NP_004152 Entrez Gene 19324 Mouse Entrez Gene 5861 Human P62820
Background:	This gene encodes a member of the Ras superfamily of GTPases. Members of the gene family cycle between inactive GDP-bound and active GTP-bound forms. This small GTPase controls vesicle traffic from the endoplasmic reticulum to the Golgi apparatus. Multiple alternatively spliced transcript variants have been identified for this gene which encode different protein isoforms. [provided by RefSeq, Oct 2008]



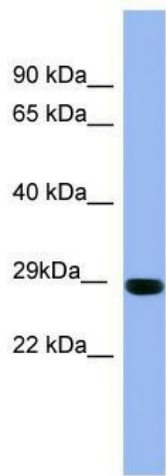
[View online »](#)

Synonyms: RAB1; YPT1

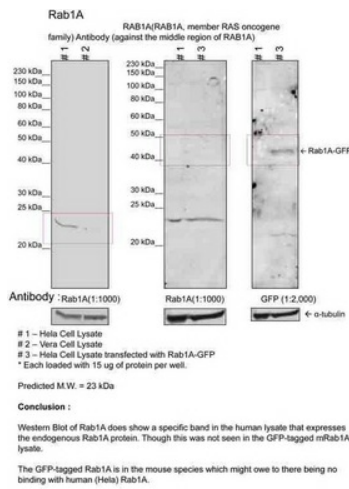
Note: Immunogen Sequence Homology: Dog: 100%; Pig: 100%; Rat: 100%; Goat: 100%; Horse: 100%; Human: 100%; Mouse: 100%; Bovine: 100%; Rabbit: 100%; Guinea pig: 100%; Zebrafish: 85%

Protein Families: Druggable Genome

Product images:

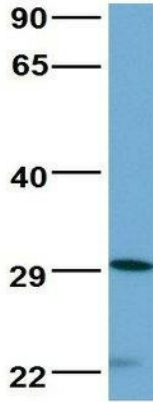


WB Suggested Anti-RAB1A Antibody Titration: 0.2-1 ug/ml; ELISA Titer: 1:312500; Positive Control: Human Muscle



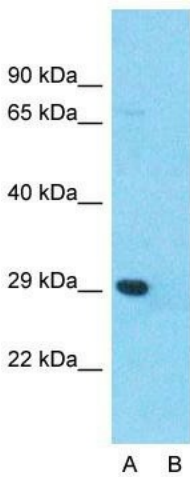
Sample Type: 1. Human Cervical Cancer Cell Lysate (15ug); 2. Monkey Fibroblast Cell Lysate (15ug); 3. Human Cervical Cancer Cell transfected with Rab1A-GFP (15ug); Primary Dilution: 1:1000; Secondary Antibody: goat anti-Rabbit; Secondary Dilution: 1:40,00

RAB1A



Rabbit Anti-RAB1A
 Sample Type: Human HepG2
 Antibody Concentration: 1ug/mL

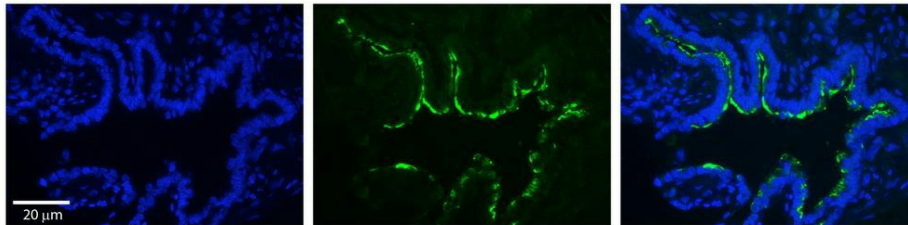
Host: Rabbit; Target Name: RAB1A; Sample Tissue: HepG2; Antibody Dilution: 1.0 ug/ml



Anti-RAB1A Western Blot & Peptide Block Validation

Lysate: HepG2 Cell
 Lane A: Primary Antibody
 Lane B: Primary Antibody + Blocking Peptide
 Primary Antibody Concentration: 2.0µg/ml
 Peptide Concentration: 5.0µg/ml
 Lysate Quantity: 25µg/lane
 Gel Concentration: 12%

Host: Rabbit; Target Name: RAB1A; Sample Tissue: HepG2; Lane A: Primary Antibody; Lane B: Primary Antibody + Blocking Peptide ; Primary Antibody Concentration:2 ug/ml; Peptide Concentration: 5.0 ug/ml; Lysate Quantity: 25ug/lane/lane; Gel Concentration: 12%



Rabbit Anti-RAB1A Antibody;Formalin Fixed Paraffin Embedded Tissue: Human Bronchial Epithelial Tissue; Observed Staining: Cytoplasmic in excellent staining; Primary Antibody Concentration: 1:100; Secondary Antibody: Donkey anti-Rabbit-Cy3; Secondary Antib