

Product datasheet for **TA342209**

Sh3gl3 Rabbit Polyclonal Antibody

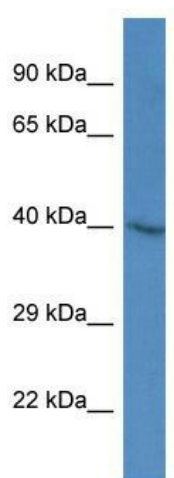
Product data:

Product Type:	Primary Antibodies
Applications:	WB
Recommended Dilution:	WB
Reactivity:	Mouse
Host:	Rabbit
Isotype:	IgG
Clonality:	Polyclonal
Immunogen:	The immunogen for anti-Sh3gl3 antibody: synthetic peptide corresponding to a region of Mouse. Synthetic peptide located within the following region: IDPLQLLQDKDLKEIGHHLRKLEGRRLDYDYKRRVGGKIPPEEIRQAVEK
Formulation:	Liquid. Purified antibody supplied in 1x PBS buffer with 0.09% (w/v) sodium azide and 2% sucrose. <i>Note that this product is shipped as lyophilized powder to China customers.</i>
Concentration:	lot specific
Purification:	Affinity Purified
Conjugation:	Unconjugated
Storage:	Store at -20°C as received.
Stability:	Stable for 12 months from date of receipt.
Predicted Protein Size:	38 kDa
Gene Name:	SH3-domain GRB2-like 3
Database Link:	NP_059096 Entrez Gene 20408 Mouse Q62421
Background:	Implicated in endocytosis. May recruit other proteins to membranes with high curvature.
Synonyms:	CNSA3; EEN-2B-L3; EEN-B2; Endophilin-3; HsT19371; SH3D2C; SH3P13
Note:	Immunogen Sequence Homology: Dog: 100%; Pig: 100%; Rat: 100%; Horse: 100%; Human: 100%; Bovine: 100%; Rabbit: 100%; Guinea pig: 100%; Mouse: 93%; Zebrafish: 93%



[View online »](#)

Product images:



WB Suggested Anti-Sh3gl3 Antibody; Titration: 1.0 ug/ml; Positive Control: Mouse Brain