

## Product datasheet for **TA342207**

### SH3GL2 Rabbit Polyclonal Antibody

#### Product data:

Product Type:	Primary Antibodies
Applications:	WB
Recommended Dilution:	WB
Reactivity:	Human, Rat
Host:	Rabbit
Isotype:	IgG
Clonality:	Polyclonal
Immunogen:	The immunogen for anti-SH3GL2 antibody: synthetic peptide directed towards the N terminal of human SH3GL2. Synthetic peptide located within the following region: INTMSKIRGQEKGPYPQAEALLAEAMLKFGRELGDDCNFGPALGEVGEA
Formulation:	Liquid. Purified antibody supplied in 1x PBS buffer with 0.09% (w/v) sodium azide and 2% sucrose. <i>Note that this product is shipped as lyophilized powder to China customers.</i>
Concentration:	lot specific
Purification:	Affinity Purified
Conjugation:	Unconjugated
Storage:	Store at -20°C as received.
Stability:	Stable for 12 months from date of receipt.
Predicted Protein Size:	40 kDa
Gene Name:	SH3 domain containing GRB2 like 2, endophilin A1
Database Link:	<a href="#">NP_003017</a> <a href="#">Entrez Gene 116743 Rat</a> <a href="#">Entrez Gene 6456 Human</a> <a href="#">Q99962</a>
Background:	Implicated in synaptic vesicle endocytosis. May recruit other proteins to membranes with high curvature.
Synonyms:	CNSA2; EEN-B1; SH3D2A; SH3P4

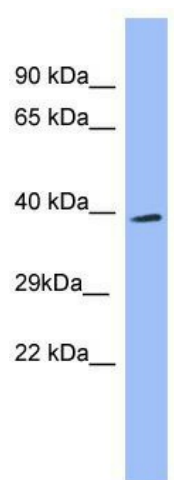


[View online »](#)

**Note:** Immunogen Sequence Homology: Dog: 100%; Pig: 100%; Rat: 100%; Horse: 100%; Human: 100%; Mouse: 100%; Bovine: 100%; Rabbit: 100%; Guinea pig: 100%; Zebrafish: 86%

**Protein Pathways:** Endocytosis

**Product images:**



WB Suggested Anti-SH3GL2 Antibody Titration:  
0.2-1 ug/ml; ELISA Titer: 1:1562500; Positive  
Control: Human Placenta