

Product datasheet for **TA342206**

SH3 containing Grb 2 like 1 protein (SH3GL1) Rabbit Polyclonal Antibody

Product data:

Product Type:	Primary Antibodies
Applications:	WB
Recommended Dilution:	WB
Reactivity:	Human, Mouse
Host:	Rabbit
Isotype:	IgG
Clonality:	Polyclonal
Immunogen:	The immunogen for anti-SH3GL1 antibody: synthetic peptide directed towards the N terminal of human SH3GL1. Synthetic peptide located within the following region: LNTVSKIRGQVKNPQSEGLLGECMIRHGKELGGESNFGDALLDAGES
Formulation:	Liquid. Purified antibody supplied in 1x PBS buffer with 0.09% (w/v) sodium azide and 2% sucrose. <i>Note that this product is shipped as lyophilized powder to China customers.</i>
Concentration:	lot specific
Purification:	Affinity Purified
Conjugation:	Unconjugated
Storage:	Store at -20°C as received.
Stability:	Stable for 12 months from date of receipt.
Predicted Protein Size:	41 kDa
Gene Name:	SH3 domain containing GRB2 like 1, endophilin A2
Database Link:	NP_003016 Entrez Gene 20405 Mouse Entrez Gene 6455 Human Q99961



[View online »](#)

Background:

This gene encodes a member of the endophilin family of Src homology 3 domain-containing proteins. The encoded protein is involved in endocytosis and may also play a role in the cell cycle. Overexpression of this gene may play a role in leukemogenesis, and the encoded protein has been implicated in acute myeloid leukemia as a fusion partner of the myeloid-lymphoid leukemia protein. Pseudogenes of this gene are located on the long arm of chromosomes 11 and 17. Alternatively spliced transcript variants encoding multiple isoforms have been observed for this gene. [provided by RefSeq, Jan 2011]

Synonyms:

CNSA1; EEN; SH3D2B; SH3P8

Note:

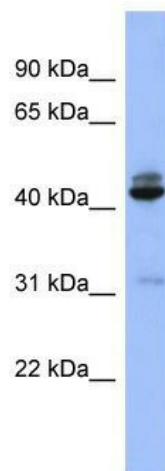
Immunogen Sequence Homology: Dog: 100%; Pig: 100%; Rat: 100%; Horse: 100%; Human: 100%; Mouse: 100%; Bovine: 100%; Guinea pig: 100%; Zebrafish: 86%; Rabbit: 79%

Protein Families:

Druggable Genome

Protein Pathways:

Endocytosis

Product images:

WB Suggested Anti-SH3GL1 Antibody Titration:
0.2-1 ug/ml; ELISA Titer: 1:1562500; Positive
Control: Jurkat cell lysate