

Product datasheet for **TA342205**

SH3BP2 Rabbit Polyclonal Antibody

Product data:

Product Type:	Primary Antibodies
Applications:	IHC, WB
Recommended Dilution:	WB, IHC
Reactivity:	Human
Host:	Rabbit
Isotype:	IgG
Clonality:	Polyclonal
Immunogen:	The immunogen for anti-SH3BP2 antibody: synthetic peptide directed towards the middle region of human SH3BP2. Synthetic peptide located within the following region: RQPSQADTGGDDSDYKVPNSVFNNTESCEVERLFKATSPRGEPQ
Formulation:	Liquid. Purified antibody supplied in 1x PBS buffer with 0.09% (w/v) sodium azide and 2% sucrose. <i>Note that this product is shipped as lyophilized powder to China customers.</i>
Concentration:	lot specific
Purification:	Affinity Purified
Conjugation:	Unconjugated
Storage:	Store at -20°C as received.
Stability:	Stable for 12 months from date of receipt.
Predicted Protein Size:	62 kDa
Gene Name:	SH3 domain binding protein 2
Database Link:	NP_003014 Entrez Gene 6452 Human P78314



[View online »](#)

Background: The protein encoded by this gene has an N-terminal pleckstrin homology (PH) domain, an SH3-binding proline-rich region, and a C-terminal SH2 domain. The protein binds to the SH3 domains of several proteins including the ABL1 and SYK protein tyrosine kinases, and functions as a cytoplasmic adaptor protein to positively regulate transcriptional activity in T, natural killer (NK), and basophilic cells. Mutations in this gene result in cherubism. Multiple transcript variants encoding different isoforms have been found for this gene. [provided by RefSeq, Mar 2009]

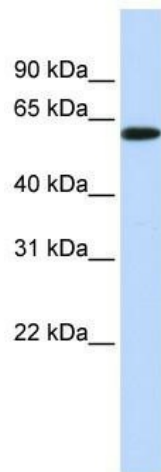
Synonyms: 3BP-2; 3BP2; CRBM; CRPM; RES4-23

Note: Immunogen Sequence Homology: Rat: 100%; Human: 100%; Mouse: 100%; Dog: 93%; Pig: 93%; Rabbit: 93%; Guinea pig: 93%; Bovine: 85%

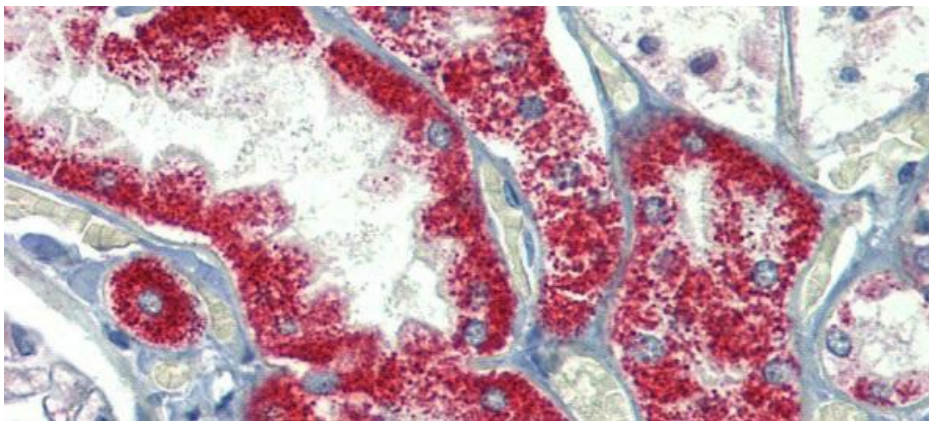
Protein Families: Druggable Genome

Protein Pathways: Natural killer cell mediated cytotoxicity

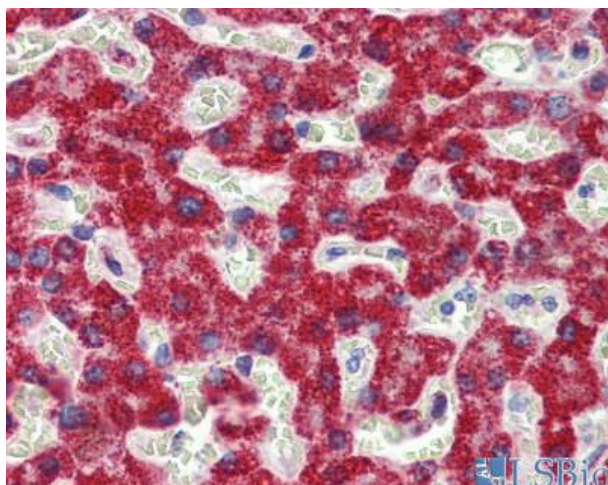
Product images:



WB Suggested Anti-SH3BP2 Antibody Titration: 1 ug/ml; Positive Control: 721_B cell lysate. SH3BP2 is strongly supported by BioGPS gene expression data to be expressed in Human 721_B cells



Immunohistochemistry with Human kidney lysate tissue at an antibody concentration of 5.0 ug/ml using anti-SH3BP2 antibody



Human Liver