

Product datasheet for **TA342202**

Sterol carrier protein 2 (SCP2) Rabbit Polyclonal Antibody

Product data:

Product Type:	Primary Antibodies
Applications:	WB
Recommended Dilution:	WB
Reactivity:	Human
Host:	Rabbit
Isotype:	IgG
Clonality:	Polyclonal
Immunogen:	The immunogen for anti-SCP2 antibody: synthetic peptide directed towards the middle region of human SCP2. Synthetic peptide located within the following region: NHKHSVNNPYSQFQDEYSLDEVMSKEVDFDLTILQCCPTSDGAAAAILA
Formulation:	Liquid. Purified antibody supplied in 1x PBS buffer with 0.09% (w/v) sodium azide and 2% sucrose. <i>Note that this product is shipped as lyophilized powder to China customers.</i>
Concentration:	lot specific
Purification:	Affinity Purified
Conjugation:	Unconjugated
Storage:	Store at -20°C as received.
Stability:	Stable for 12 months from date of receipt.
Predicted Protein Size:	35 kDa
Gene Name:	sterol carrier protein 2
Database Link:	NP_001007099 Entrez Gene 6342 Human P22307



[View online »](#)

Background:

This gene encodes two proteins: sterol carrier protein X (SCPx) and sterol carrier protein 2 (SCP2), as a result of transcription initiation from 2 independently regulated promoters. The transcript initiated from the proximal promoter encodes the longer SCPx protein, and the transcript initiated from the distal promoter encodes the shorter SCP2 protein, with the 2 proteins sharing a common C-terminus. Evidence suggests that the SCPx protein is a peroxisome-associated thiolase that is involved in the oxidation of branched chain fatty acids, while the SCP2 protein is thought to be an intracellular lipid transfer protein. This gene is highly expressed in organs involved in lipid metabolism, and may play a role in Zellweger syndrome, in which cells are deficient in peroxisomes and have impaired bile acid synthesis. Alternative splicing of this gene produces multiple transcript variants, some encoding different isoforms. [provided by RefSeq, Aug 2010]

Synonyms:

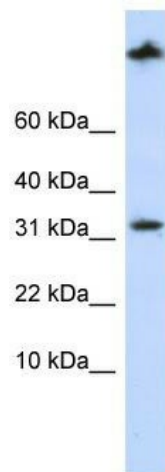
NLTP; NSL-TP; SCP-2; SCP-CHI; SCP-X; SCPX

Note:

Immunogen Sequence Homology: Rat: 100%; Human: 100%; Pig: 93%; Horse: 93%; Mouse: 93%; Zebrafish: 93%; Guinea pig: 93%

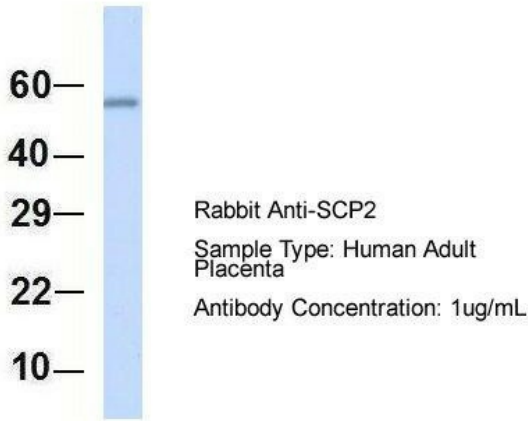
Protein Pathways:

Metabolic pathways, PPAR signaling pathway, Primary bile acid biosynthesis

Product images:

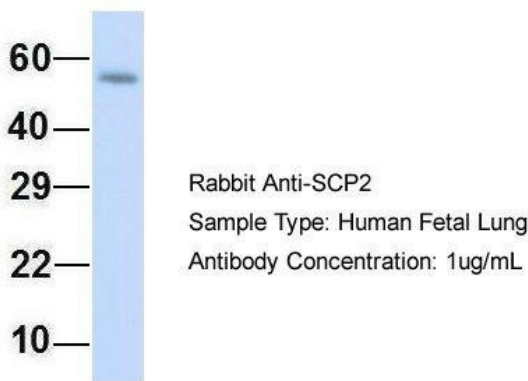
WB Suggested Anti-SCP2 Antibody Titration: 0.2-1 ug/ml; ELISA Titer: 1:312500; Positive Control: MCF7 cell lysate

SCP2



Host: Rabbit; Target Name: SCP2; Sample Tissue: Human Adult Placenta; Antibody Dilution: 1.0 ug/ml

SCP2



Host: Rabbit; Target Name: SCP2; Sample Tissue: Human Fetal Lung; Antibody Dilution: 1.0 ug/ml