

## Product datasheet for **TA342200**

### SAPK3 (MAPK12) Rabbit Polyclonal Antibody

#### Product data:

Product Type:	Primary Antibodies
Applications:	WB
Recommended Dilution:	WB
Reactivity:	Mouse
Host:	Rabbit
Isotype:	IgG
Clonality:	Polyclonal
Immunogen:	The immunogen for anti-Mapk12 antibody: synthetic peptide corresponding to a region of Mouse. Synthetic peptide located within the following region: ERMLVLDAEQRVTAEEALTHPYFESLRDTEDEPKAQKYDDSFDDVDRTLE
Formulation:	Liquid. Purified antibody supplied in 1x PBS buffer with 0.09% (w/v) sodium azide and 2% sucrose. <i>Note that this product is shipped as lyophilized powder to China customers.</i>
Concentration:	lot specific
Purification:	Affinity Purified
Conjugation:	Unconjugated
Storage:	Store at -20°C as received.
Stability:	Stable for 12 months from date of receipt.
Predicted Protein Size:	40 kDa
Gene Name:	mitogen-activated protein kinase 12
Database Link:	<a href="#">NP_002960</a> <a href="#">Entrez Gene 29857 Mouse</a> <a href="#">P53778</a>
Background:	Mapk12 responds to activation by environmental stress and pro-inflammatory cytokines by phosphorylating downstream targets. Mapk12 plays a role in myoblast differentiation and also in the down-regulation of cyclin D1 in response to hypoxia in adrenal cells suggesting MAPK12 may inhibit cell proliferation while promoting differentiation.
Synonyms:	ERK-6; ERK3; ERK6; MAPK 12; P38GAMMA; PRKM12; SAPK-3; SAPK3



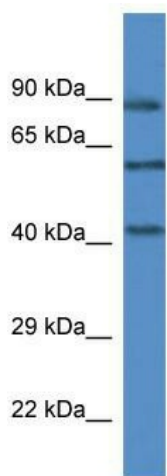
[View online »](#)

**Note:** Immunogen Sequence Homology: Rat: 100%; Human: 100%; Mouse: 100%; Rabbit: 100%; Dog: 93%; Pig: 93%; Horse: 93%; Guinea pig: 93%; Bovine: 79%

**Protein Families:** Druggable Genome, Protein Kinase

**Protein Pathways:** Amyotrophic lateral sclerosis (ALS), Epithelial cell signaling in Helicobacter pylori infection, Fc epsilon RI signaling pathway, GnRH signaling pathway, Leukocyte transendothelial migration, MAPK signaling pathway, Neurotrophin signaling pathway, NOD-like receptor signaling pathway, Oocyte meiosis, Progesterone-mediated oocyte maturation, RIG-I-like receptor signaling pathway, T cell receptor signaling pathway, Toll-like receptor signaling pathway, VEGF signaling pathway

### Product images:



WB Suggested Anti-Mapk12 Antibody; Titration: 1.0 ug/ml; Positive Control: Mouse Liver