

Product datasheet for **TA342198**

RPA70 (RPA1) Rabbit Polyclonal Antibody

Product data:

Product Type:	Primary Antibodies
Applications:	WB
Recommended Dilution:	WB
Reactivity:	Human
Host:	Rabbit
Isotype:	IgG
Clonality:	Polyclonal
Immunogen:	The immunogen for anti-RPA1 antibody: synthetic peptide directed towards the middle region of human RPA1. Synthetic peptide located within the following region: TLWGEDADKFDGSRQPVLAIKGARVSDFGGRSLSVLSSTIIANPDIPEA
Formulation:	Liquid. Purified antibody supplied in 1x PBS buffer with 0.09% (w/v) sodium azide and 2% sucrose. <i>Note that this product is shipped as lyophilized powder to China customers.</i>
Concentration:	lot specific
Purification:	Affinity Purified
Conjugation:	Unconjugated
Storage:	Store at -20°C as received.
Stability:	Stable for 12 months from date of receipt.
Predicted Protein Size:	68 kDa
Gene Name:	replication protein A1
Database Link:	NP_002936 Entrez Gene 6117 Human P27694
Background:	RPA1 plays an essential role in several cellular processes in DNA metabolism including replication, recombination and DNA repair. RPA1 binds and subsequently stabilizes single-stranded DNA intermediates and thus prevents complementary DNA from reannealing
Synonyms:	HSSB; MST075; REPA1; RF-A; RP-A; RPA70



[View online »](#)

Note: Immunogen Sequence Homology: Pig: 100%; Rat: 100%; Human: 100%; Mouse: 100%; Guinea pig: 100%; Dog: 93%; Horse: 93%; Sheep: 93%; Bovine: 93%; Rabbit: 93%

Protein Families: Druggable Genome, Stem cell - Pluripotency

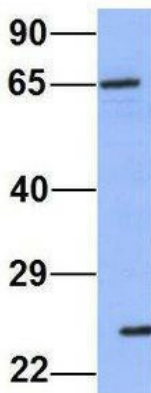
Protein Pathways: DNA replication, Homologous recombination, Mismatch repair, Nucleotide excision repair

Product images:



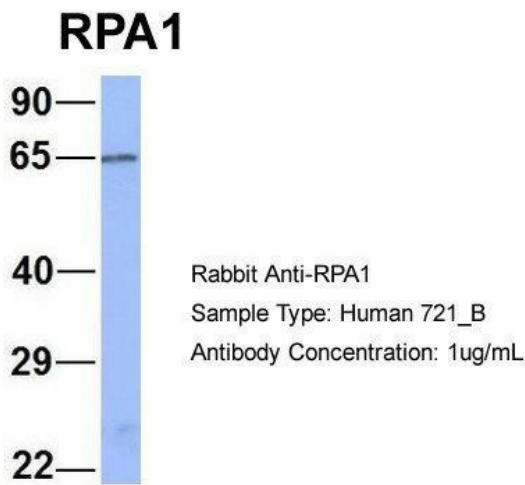
WB Suggested Anti-RPA1 Antibody Titration: 0.2-1 ug/ml; ELISA Titer: 1:312500; Positive Control: HepG2 cell lysate

RPA1

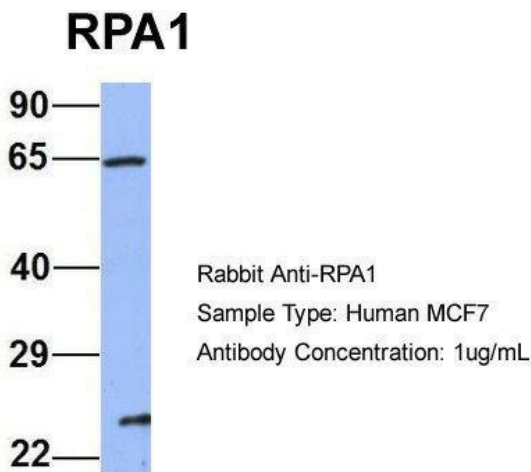


Rabbit Anti-RPA1
 Sample Type: Human HeLa
 Antibody Concentration: 1ug/mL

Host: Rabbit; Target Name: RPA1; Sample Tissue: Human HeLa; Antibody Dilution: 1.0 ug/ml; RPA1 is strongly supported by BioGPS gene expression data to be expressed in HeLa



Host: Rabbit; Target Name: RPA1; Sample Tissue: Human 721_B; Antibody Dilution: 1.0 ug/ml; RPA1 is strongly supported by BioGPS gene expression data to be expressed in Human 721_B cells



Host: Rabbit; Target Name: RPA1; Sample Tissue: Human MCF7; Antibody Dilution: 1.0 ug/ml; RPA1 is supported by BioGPS gene expression data to be expressed in MCF7