

Product datasheet for **TA342197**

RPA70 (RPA1) Rabbit Polyclonal Antibody

Product data:

Product Type:	Primary Antibodies
Applications:	WB
Recommended Dilution:	WB
Reactivity:	Human
Host:	Rabbit
Isotype:	IgG
Clonality:	Polyclonal
Immunogen:	The immunogen for anti-RPA1 antibody: synthetic peptide directed towards the middle region of human RPA1. Synthetic peptide located within the following region: SRGEGKLFSLVDESGEIRATAFNEQVDKFFPLIEVNKVVYFSGTLKI
Formulation:	Liquid. Purified antibody supplied in 1x PBS buffer with 0.09% (w/v) sodium azide and 2% sucrose. <i>Note that this product is shipped as lyophilized powder to China customers.</i>
Concentration:	lot specific
Purification:	Affinity Purified
Conjugation:	Unconjugated
Storage:	Store at -20°C as received.
Stability:	Stable for 12 months from date of receipt.
Predicted Protein Size:	68 kDa
Gene Name:	replication protein A1
Database Link:	NP_002936 Entrez Gene 6117 Human P27694
Background:	RPA1 plays an essential role in several cellular processes in DNA metabolism including replication, recombination and DNA repair. RPA1 binds and subsequently stabilizes single-stranded DNA intermediates and thus prevents complementary DNA from reannealing
Synonyms:	HSSB; MST075; REPA1; RF-A; RP-A; RPA70



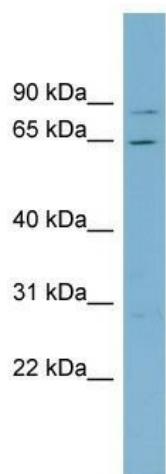
[View online »](#)

Note: Immunogen Sequence Homology: Dog: 100%; Pig: 100%; Rat: 100%; Horse: 100%; Human: 100%; Mouse: 100%; Sheep: 100%; Bovine: 100%; Rabbit: 100%; Yeast: 93%; Guinea pig: 93%; Zebrafish: 92%

Protein Families: Druggable Genome, Stem cell - Pluripotency

Protein Pathways: DNA replication, Homologous recombination, Mismatch repair, Nucleotide excision repair

Product images:



WB Suggested Anti-RPA1 Antibody Titration: 0.2-1 ug/ml; Positive Control: Hela cell lysate RPA1 is strongly supported by BioGPS gene expression data to be expressed in Human HeLa cells