

Product datasheet for **TA342194**

RFC1 Rabbit Polyclonal Antibody

Product data:

Product Type:	Primary Antibodies
Applications:	WB
Recommended Dilution:	WB
Reactivity:	Rat
Host:	Rabbit
Isotype:	IgG
Clonality:	Polyclonal
Immunogen:	The immunogen for Anti-Rfc1 antibody is: synthetic peptide directed towards the C-terminal region of Rat Rfc1. Synthetic peptide located within the following region: SPTKRESVSPEDSEKRTNYQAYRSYLNREGPKALGSKEIPKGAENCLEG
Formulation:	Liquid. Purified antibody supplied in 1x PBS buffer with 0.09% (w/v) sodium azide and 2% sucrose. <i>Note that this product is shipped as lyophilized powder to China customers.</i>
Concentration:	lot specific
Purification:	Affinity Purified
Conjugation:	Unconjugated
Storage:	Store at -20°C as received.
Stability:	Stable for 12 months from date of receipt.
Predicted Protein Size:	72 kDa
Gene Name:	replication factor C subunit 1
Database Link:	NP_002904 Entrez Gene 89809 Rat P35251
Background:	transcriptional repressor that regulates transcription ofThe vasoactive intestinal peptide receptor gene [RGD, Feb 2006]. ##Evidence-Data-START## RNAseq introns :: single sample supports all introns ERS160522, ERS240727 [ECO:0000348] ##Evidence-Data-END##
Synonyms:	A1; MHCBFB; PO-GA; RECC1; RFC; RFC140



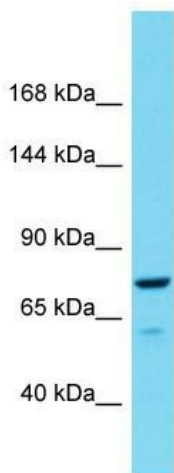
[View online »](#)

Note: Immunogen Sequence Homology: Pig: 100%; Rat: 100%; Human: 100%; Mouse: 100%; Rabbit: 100%; Guinea pig: 100%; Dog: 93%; Horse: 93%

Protein Families: Transcription Factors

Protein Pathways: DNA replication, Mismatch repair, Nucleotide excision repair

Product images:



Host: Rabbit
Target Name: Rfc1
Sample Tissue: Rat Testis Lysate
Antibody Dilution: 1.0µg/ml

Host: Rabbit; Target Name: Rfc1; Sample Tissue: Rat Testis lysates; Antibody Dilution: 1.0 ug/ml