

## Product datasheet for **TA342193**

### Radixin (RDX) Rabbit Polyclonal Antibody

#### Product data:

Product Type:	Primary Antibodies
Applications:	WB
Recommended Dilution:	WB
Reactivity:	Human
Host:	Rabbit
Isotype:	IgG
Clonality:	Polyclonal
Immunogen:	The immunogen for anti-RDX antibody: synthetic peptide directed towards the middle region of human RDX. Synthetic peptide located within the following region: MSAPPPPPPPVIPPTENEHDEHDENNAEASAELSNEGVMNHRSEERV
Formulation:	Liquid. Purified antibody supplied in 1x PBS buffer with 0.09% (w/v) sodium azide and 2% sucrose. <i>Note that this product is shipped as lyophilized powder to China customers.</i>
Concentration:	lot specific
Purification:	Affinity Purified
Conjugation:	Unconjugated
Storage:	Store at -20°C as received.
Stability:	Stable for 12 months from date of receipt.
Predicted Protein Size:	68 kDa
Gene Name:	radixin
Database Link:	<a href="#">NP_002897</a> <a href="#">Entrez Gene 5962 Human P35241</a>



[View online »](#)

**Background:** Radixin is a cytoskeletal protein that may be important in linking actin to the plasma membrane. It is highly similar in sequence to both ezrin and moesin. The radixin gene has been localized by fluorescence in situ hybridization to 11q23. A truncated version representing a pseudogene (RDXP2) was assigned to Xp21.3. Another pseudogene that seemed to lack introns (RDXP1) was mapped to 11p by Southern and PCR analyses. Multiple alternatively spliced transcript variants encoding different isoforms have been found for this gene. [provided by RefSeq, May 2012]

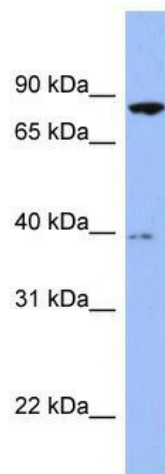
**Synonyms:** DFNFB24

**Note:** Immunogen Sequence Homology: Rat: 100%; Horse: 100%; Human: 100%; Mouse: 100%; Bovine: 100%; Dog: 93%; Pig: 93%; Rabbit: 93%; Guinea pig: 92%

**Protein Families:** Druggable Genome

**Protein Pathways:** Regulation of actin cytoskeleton

### Product images:



WB Suggested Anti-RDX Antibody Titration: 0.2-1 ug/ml; ELISA Titer: 1:312500; Positive Control: Human brain