

Product datasheet for **TA342190**

RASGRF1 Rabbit Polyclonal Antibody

Product data:

Product Type:	Primary Antibodies
Applications:	WB
Recommended Dilution:	WB
Reactivity:	Human
Host:	Rabbit
Isotype:	IgG
Clonality:	Polyclonal
Immunogen:	The immunogen for anti-RASGRF1 antibody: synthetic peptide directed towards the N terminal of human RASGRF1. Synthetic peptide located within the following region: RELDNNRSALSAASAFAIATAGANEGTPNKEKYRRMSLASAGFPPDQRNG
Formulation:	Liquid. Purified antibody supplied in 1x PBS buffer with 0.09% (w/v) sodium azide and 2% sucrose. <i>Note that this product is shipped as lyophilized powder to China customers.</i>
Concentration:	lot specific
Purification:	Affinity Purified
Conjugation:	Unconjugated
Storage:	Store at -20°C as received.
Stability:	Stable for 12 months from date of receipt.
Predicted Protein Size:	54 kDa
Gene Name:	Ras protein specific guanine nucleotide releasing factor 1
Database Link:	NP_722522 Entrez Gene 5923 Human Q13972



[View online »](#)

Background: The protein encoded by this gene is a guanine nucleotide exchange factor (GEF) similar to the *Saccharomyces cerevisiae* CDC25 gene product. Functional analysis has demonstrated that this protein stimulates the dissociation of GDP from RAS protein. The studies of the similar gene in mouse suggested that the Ras-GEF activity of this protein in brain can be activated by Ca²⁺ influx, muscarinic receptors, and G protein beta-gamma subunit. Mouse studies also indicated that the Ras-GEF signaling pathway mediated by this protein may be important for long-term memory. Alternatively spliced transcript variants encoding distinct isoforms have been reported. [provided by RefSeq, Mar 2009]

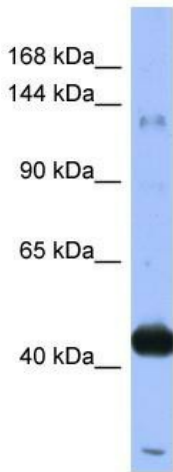
Synonyms: CDC25; CDC25L; GNRP; GRF1; GRF55; H-GRF55; PP13187; ras-GRF1

Note: Immunogen Sequence Homology: Dog: 100%; Pig: 100%; Rat: 100%; Human: 100%; Bovine: 100%; Guinea pig: 100%; Horse: 93%; Rabbit: 93%; Zebrafish: 93%; Mouse: 85%

Protein Families: Druggable Genome

Protein Pathways: Focal adhesion, MAPK signaling pathway

Product images:



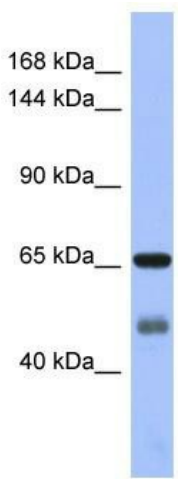
Host: Rabbit
 Target Name: RASGRF1
 Sample Tissue: HepG2 Cell Lysate
 Antibody Dilution: 1.0 µg/ml

Host: Rabbit; Target Name: RASGRF1; Sample Tissue: HepG2 Cell lysates; Antibody Dilution: 1.0 µg/ml



Host: Rabbit
Target Name: RASGRF1
Sample Tissue: Fetal Brain Lysate
Antibody Dilution: 1.0µg/ml

Host: Rabbit; Target Name: RASGRF1; Sample Tissue: Human Fetal Brain; Antibody Dilution: 1.0 ug/ml



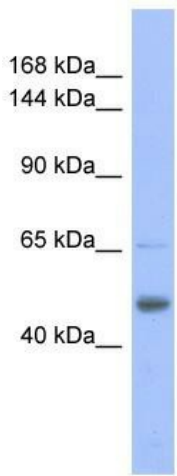
Host: Rabbit
Target Name: RASGRF1
Sample Tissue: Fetal Heart Lysate
Antibody Dilution: 1.0µg/ml

Host: Rabbit; Target Name: RASGRF1; Sample Tissue: Human Fetal Heart; Antibody Dilution: 1.0 ug/ml



Host: Rabbit
Target Name: RASGRF1
Sample Tissue: Fetal Lung Lysate
Antibody Dilution: 1.0µg/ml

Host: Rabbit; Target Name: RASGRF1; Sample Tissue: Human Fetal Lung; Antibody Dilution: 1.0 ug/ml



Host: Rabbit
Target Name: RASGRF1
Sample Tissue: Fetal Liver Lysate
Antibody Dilution: 1.0 μ g/ml

Host: Rabbit; Target Name: RASGRF1; Sample Tissue: Human Fetal Liver; Antibody Dilution: 1.0 ug/ml