

Product datasheet for **TA342184**

RAB5B Rabbit Polyclonal Antibody

Product data:

Product Type:	Primary Antibodies
Applications:	IHC, WB
Recommended Dilution:	WB, IHC
Reactivity:	Human, Mouse, Zebrafish
Host:	Rabbit
Isotype:	IgG
Clonality:	Polyclonal
Immunogen:	The immunogen for anti-RAB5B antibody: synthetic peptide directed towards the N terminal of human RAB5B. Synthetic peptide located within the following region: MTSRSTARPNQGPQASKICQFKLVLLGESAVGKSSLVLRVKGQFHEYQE
Formulation:	Liquid. Purified antibody supplied in 1x PBS buffer with 0.09% (w/v) sodium azide and 2% sucrose. <i>Note that this product is shipped as lyophilized powder to China customers.</i>
Concentration:	lot specific
Purification:	Affinity Purified
Conjugation:	Unconjugated
Storage:	Store at -20°C as received.
Stability:	Stable for 12 months from date of receipt.
Predicted Protein Size:	24 kDa
Gene Name:	RAB5B, member RAS oncogene family
Database Link:	NP_002859 Entrez Gene 19344 Mouse Entrez Gene 5869 Human P61020
Background:	Protein transport. Probably involved in vesicular traffic.
Synonyms:	member RAS oncogene family; RAB5B
Note:	Immunogen Sequence Homology: Dog: 100%; Pig: 100%; Rat: 100%; Horse: 100%; Human: 100%; Mouse: 100%; Bovine: 100%; Rabbit: 100%; Guinea pig: 100%

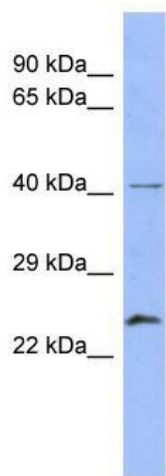


[View online »](#)

Protein Families: Druggable Genome

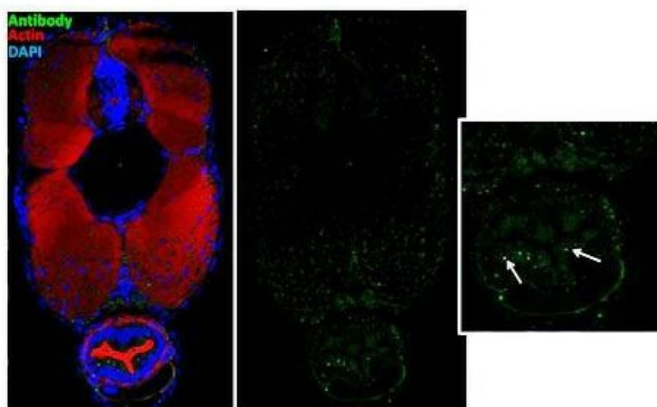
Protein Pathways: Endocytosis

Product images:



WB Suggested Anti-RAB5B Antibody Titration: 0.2-1 ug/ml; ELISA Titer: 1:312500; Positive Control: Human Placenta

RAB5B- 5dpf



Sample type:zebrafish gut epithelial cells; Green:??primary; Red:??ctin; Blue: DAPI; Primary dilution: 1:5000; Secondary Dilution: 1:300; Image Submitted by:??ichel Bagnat; Duke University Medical Center??ee Customer Feedback tab for detailed information.;